



The 2010 E-Class

Mercedes-Benz



امداد خودرو فارما

تلفن شبانه روزی: ۰۸۵-۸۸۸۶۲-۰۲۱

FarmaSOS.com

Who could have imagined? When Mercedes-Benz created an entirely new class of automobile more than 60 years ago, nobody predicted it would come to define not just the brand that invented the first car, but a standard by which all cars are measured. For eight generations, the E-Class has been more than a car drivers dream about. It's what other cars dream they could be. For 2010, it all begins anew, with what is perhaps the most technologically advanced production automobile ever. It does things you never imagined a car might do. Which is exactly what one automaker has always done. This is the new E-Class.

This is Mercedes-Benz.

For more information, visit www.mbusa.com/e-class

Iconic. Idolized. And soon to be imitated. Again.

The car of tomorrow is the right car for today. From the seemingly limitless endurance of the 1950s “Ponton” body, to the much-copied style of the 1970s 280 Sedan, to the 1980s 300 E that *AUTOMOBILE Magazine* called “true greatness,” the E-Class has long defined what other cars will someday become. The 2010 E-Class Sedans and Coupes are showcases of futuristic technology, indeed. But their greatest innovation is demonstrating that you can love driving, care for your family, respect the earth and even spend wisely. All at once, like no car before. Let the imitation begin.



E 350 Coupe shown above with optional Palladium Silver metallic paint and Premium 2 Package.
E 350 Sport Sedan shown at right with optional Iridium Silver metallic paint, Wheel Package and Premium 2 Package.

It has the power to motivate every car that follows it.

Someday, other cars will drive like this. Imagine an advanced AGILITY CONTROL or AIRMATIC suspension that reacts to the road surface, instantly recalibrating for the most gratifying balance of sharp and supple. A 7-speed automatic transmission that adapts to your driving style, shifting as your mood does. Engines that only call on their alternator and power steering pump as needed, sipping less gasoline whenever they're not fueling your exuberance. The E-Class will lead other automakers to the future. But first, it will stop them in their tracks.

Compellingly powerful gasoline engines — a 268-hp V-6 and a 382-hp V-8 — offer low emissions and improved fuel efficiency.

The 50-state BlueTEC clean diesel V-6 sedans' generate massive torque with lower greenhouse-gas emissions than comparable gasoline engines.

E350 and E550 4MATIC Sedans' offer the all-season, all-road confidence of an all-wheel drive system that adds minimal weight.

The E550 Coupe's Dynamic Handling suspension alters the damping rates, accelerator response and shift points, all at the touch of a single button.

امداد خودرو فارما

تلفن شبانه روزی: ۰۲۱-۸۸۸۶۲۰۸۵

FarmaSOS.com



DISTRONIC PLUS Optional DISTRONIC PLUS takes cruise control to new levels of convenience, with the ability to slow the car to a full halt if traffic ahead stops, and then resume automatically.²

PRE-SAFE Brake PRE-SAFE Brake is included with DISTRONIC PLUS. Its radar-based sensors can detect an impending collision and automatically apply 100% of the vehicle's braking force to help avoid and reduce the severity of impact.²

PRE-SAFE PRE-SAFE can detect, during certain vehicle maneuvers, that a frontal impact is imminent. It can then tighten the front seat belts, adjust the front head restraints and passenger seat, and close the windows and sunroof, all to better prepare the occupants.⁴

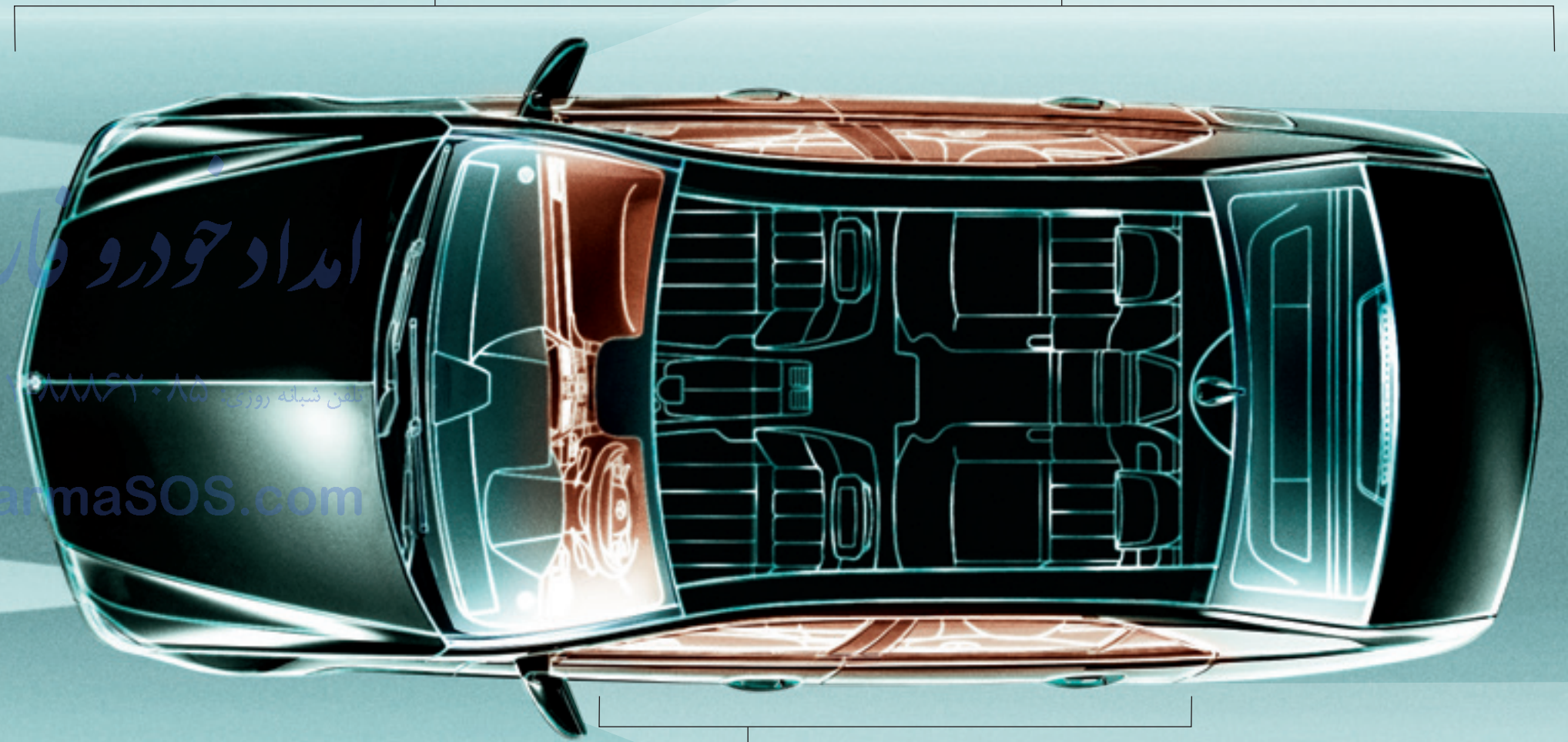
Adaptive headlamps Using a camera to detect vehicles ahead, optional Adaptive Highbeam Assist varies the headlamp range continuously, to maximize illumination of the road without creating glare for other drivers.

ATTENTION ASSIST ATTENTION ASSIST, standard on all E-Class models, continually monitors driving behavior, and can alert the driver with both visual and audible warnings if it detects signs of drowsiness on long trips.³

Lane Keeping Assist Lane Keeping Assist⁹ lets the driver of an E-Class Sedan know if unintended drifting off-course is detected, by vibrating the steering wheel.⁶

Body structure Both the sedan and pillarless coupe body structures expertly manage both weight and impact forces by utilizing ultra-high-strength steel in critical areas.

Blind Spot Assist By monitoring the blind spots to either side of the E-Class Sedan when driving above 18 mph, this option⁵ can alert the driver of some otherwise unseen vehicles in the next lane.⁸



Up to 11 air bags No other car in its class offers air bag protection in more locations: nine standard air bags,⁷ including a driver's knee air bag, plus new pelvic air bags to complement the front-seat side-impact air bags. Rear-seat side-impact air bags are also optional.

It can predict the future. And change history.

Foresight with fortitude. Its PRE-SAFE[®] system can detect an impending collision, while its optional DISTRONIC PLUS helps brake the car.² Its ATTENTION ASSIST can tell if you're getting sleepy on a long drive.³ Its adaptive Bi-Xenon headlamps continuously vary the shape of their beams, to brighten more of the road while reducing glare to oncoming drivers. If all that's not enough, it has up to 11 air bags⁷ – including new pelvic air bags for the front seats. Even by looking just a few milliseconds ahead, the new E-Class can alter the course of your future.

Please see endnotes in back of brochure.

امداد خودرو فارما
 تلفن شبانه روزی: ۰۲۱۸۸۸۶۲۰۸۵
 FarmaSOS.com



COMAND with central controller. A high-resolution color-LCD display and a console-mounted controller deliver intuitively easy access to virtually all functions of the audio and optional navigation systems.

Ambient lighting. A network of efficient LEDs and fiber optics casts a gentle glow from beneath the dash and door trim of the new E-Class Sedans, to help make nighttime driving feel more secure.

E 550 Sport Sedan shown with Almond/Black interior, Burl Walnut wood trim and optional Premium 2 Package, Night View Assist PLUS and PARKTRONIC. Please see endnotes in back of brochure.

It will show you things you've never seen.

Engineered to enlighten. Even in the middle of the night, the new E-Class doesn't leave you in the dark. Enscorced amid the warm glow of its cabin, the E-Class brings visionary new driving capabilities to light. An elegant central controller provides intuitive access to your entertainment with a twist of your hand. Other available systems help you back up, or maneuver into a parking space, or spot pedestrians at night using imperceptible infrared light.⁹ The E-Class sheds new light on what a car can do for you.

Night View Assist PLUS. By projecting infrared beams that are invisible to human eyes, and reading them with a special camera, this E-Class Sedan option displays a clearer view of the road during darkness. It can even identify and point out pedestrians.⁹

Rear view camera and PARKTRONIC. The optional camera¹⁰ projects a live color image on the in-dash LCD monitor. Optional PARKTRONIC with new Parking Guidance can help the driver maneuver into a parking space and avoid obstacles that might be out of view.

امداد خودرو فارس

تلفن شبانه روزی: ۰۲۱-۸۸۸۶۲۰۸۸

FarmaSOS.com

The E-Class Sedans. From their four aggressively squared headlamps and arrow-shaped hood to their wide LED taillamps, the six sedans of the E-Class take a modern, muscular stance and express it with brilliant detail. Sport Sedans take to the road with 18" wheels¹¹ and a sport-tuned chassis, while Luxury Sedans feature more comfort-oriented tuning and elegant 17" wheels. The E 550 Sedans ride on AIRMATIC adaptive air suspension. Choices in power include a 50-state BlueTEC clean diesel,¹ plus gasoline V-6 and V-8 models that are also available with 4MATIC all-wheel drive.¹



E 350 Sport Sedan

Engine 3.5-liter gasoline V-6, 268 hp @ 6,000 rpm, 258 lb-ft net torque @ 2,400-5,000 rpm
Transmission 7-speed automatic
Wheels 18" 5-spoke¹¹
Suspension Sport-tuned with AGILITY CONTROL
Drivetrain Rear-wheel or 4MATIC all-wheel drive¹

E 350 Luxury Sedan

Engine 3.5-liter gasoline V-6, 268 hp @ 6,000 rpm, 258 lb-ft net torque @ 2,400-5,000 rpm
Transmission 7-speed automatic
Wheels 17" split 5-spoke
Suspension Comfort-tuned with AGILITY CONTROL
Drivetrain Rear-wheel or 4MATIC all-wheel drive¹

E 550 Sport Sedan

Engine 5.5-liter gasoline V-8, 382 hp @ 6,000 rpm, 391 lb-ft net torque @ 2,800-4,800 rpm
Transmission 7-speed automatic
Wheels 18" AMG twin 6-spoke¹¹
Suspension AIRMATIC with Adaptive Damping
Drivetrain Rear-wheel or 4MATIC all-wheel drive¹

E 550 Luxury Sedan

Engine 5.5-liter gasoline V-8, 382 hp @ 6,000 rpm, 391 lb-ft net torque @ 2,800-4,800 rpm
Transmission 7-speed automatic
Wheels 17" split 5-spoke
Suspension AIRMATIC with Adaptive Damping
Drivetrain Rear-wheel or 4MATIC all-wheel drive¹

E 350 BlueTEC Sport Sedan¹

Engine 3.0-liter BlueTEC diesel V-6, 210 hp @ 3,800 rpm, 400 lb-ft net torque @ 1,600-2,400 rpm
Transmission 7-speed automatic
Wheels 17" split 5-spoke
Suspension Sport-tuned with AGILITY CONTROL
Drivetrain Rear-wheel drive

E 350 BlueTEC Luxury Sedan¹

Engine 3.0-liter BlueTEC diesel V-6, 210 hp @ 3,800 rpm, 400 lb-ft net torque @ 1,600-2,400 rpm
Transmission 7-speed automatic
Wheels 17" split 5-spoke
Suspension Comfort-tuned with AGILITY CONTROL
Drivetrain Rear-wheel drive



E 550 Luxury Sedan shown with Almond Beige interior, Burl Walnut wood trim and optional Premium 2 Package, wood/leather steering wheel and Drive-Dynamic multicontour front seats. Please see endnotes in back of brochure.

E-Class Sedans. Advanced technology is expressed with both modern style and old-world craftsmanship in the spacious E-Class Sedan cabin. Polished wood and chrome trim complement the precisely double-stitched upholstery. A multifunction steering wheel and the central controller of the COMAND system put the most commonly used functions within easy reach. And both a power glass sunroof and a hands-free Bluetooth® interface¹² are standard equipment, to help you feel more connected to the outside world. While an extensive menu of available luxuries entices you to stay inside.

14-way power front seats. Using the signature seat-shaped controls pioneered by Mercedes-Benz, each front seat includes 4-way power lumbar support and 3-position memory. NECK-PRO active front head restraints help reduce whiplash injuries.

harman/kardon sound. Enhancing the standard in-dash 6-disc DVD/CD changer is an available 610-watt LOGIC7® audio system with Dolby® Digital 5.1 surround sound, plus SIRIUS® Satellite Radio¹³ and SIRIUS Traffic™ service.

Navigation. Using the standard 7" color-LCD display and a 40GB hard drive, the available navigation system¹⁴ includes Zagat® Survey ratings for restaurants, hotels and golf courses. It's easily operated by an advanced voice control system.

Multimedia entertainment. Navigation-equipped models let you bring your own music on CDs, DVDs, memory card, iPod®¹⁵ – or even store it on a 6GB portion of the in-dash hard drive.

Paddle shifters. For one-touch control and a roomier console, E-Class Sedans feature a steering-column-mounted gearshift lever and paddle shifters that put gear selection at your fingertips.

The E-Class Coupes. At Mercedes-Benz, there is only one way to build a true coupe. With a wind-taming design, a windswept pillarless profile, and winning performance. The first E-Class Coupe in 15 years earns its grille-mounted Star on all counts. Its aggressively chiseled body achieves a drag coefficient of just 0.28. Its four elegantly arched side windows fully retract for an airy span from windshield to rear window, crowned by a standard all-glass Panorama sunroof. And because it's the new E-Class, it's as dynamic as it is aerodynamic. It's panoramic. Pillarless. And peerless.



تلفن شبانه روزی: ۰۲۱-۸۸۸۶۲۰۸۵

FarmaSOS.com



E-Class Coupes. Long, low and wide, the E-Class Coupes strike an aggressively confident stance. Staggered-width wheels — 17" on the E 350 and 18" on the E 550 Coupe¹¹ — wear wider tires at the rear for more surefooted acceleration and crisper steering feedback. LED taillamps wrap dramatically into the muscular rear quarters. Dual polished exhaust tips, trapezoidal on the E 550, hint at the power within. Underpinning it all is the AGILITY CONTROL suspension of the E 350, or the E 550 Coupe's lowered, sport-tuned Dynamic Handling suspension, upgraded brakes and sculpted lower bodywork.

E 350 Coupe

Engine 3.5-liter gasoline V-6, 268 hp @ 6,000 rpm, 258 lb-ft net torque @ 2,400-5,000 rpm
Transmission 7-speed automatic
Wheels 17" split 5-spoke
Suspension AGILITY CONTROL
Drivetrain Rear-wheel drive

E 550 Coupe

Engine 5.5-liter gasoline V-8, 382 hp @ 6,000 rpm, 391 lb-ft net torque @ 2,800-4,800 rpm
Transmission 7-speed automatic with paddle shifters
Wheels 18" 5-spoke¹¹
Suspension Sport-tuned with Dynamic Handling
Drivetrain Rear-wheel drive

آراد خودرو فارما

شماره تماس: ۰۲۱-۸۸۸۶۲۰۸۵

FarmaSOS.com

E-Class Coupes. While the heart of a true coupe is most evident in its performance, its soul is revealed in its cabin. Inside the new E-Class Coupe is the ultramodern expression of another Mercedes-Benz coupe tradition: individually contoured seating for four adults. No other coupe combines the inviting openness of its pillarless design and standard glass Panorama sunroof with the intimacy of its four seductively sculpted seats. And with its exquisitely detailed controls, double-stitched leather and polished wood trim, it's as refined as it is radical.

14-way power sport front seats. Deeply contoured sport front seats feature rich leather, NECK-PRO active head restraints, 4-way power lumbar support and 3-position memory.

Split-folding rear seats. Performance need not overpower practicality. The coupes' rear seatbacks can be folded down in a 2/3:1/3 split to expand the already generous trunk space.

harman/kardon sound. Enhancing the E-Class Coupes' standard in-dash 6-disc DVD/CD changer is an available 450-watt LOGIC7® system with Dolby® Digital 5.1 surround-sound. This option also comes with SIRIUS® Satellite Radio¹³ and SIRIUS Traffic™ service.

Navigation and multimedia music. The optional hard-drive-based navigation system¹⁴ can store up to 6GB of music from your CDs on its 40GB hard drive. It includes iPod® integration¹⁵ and an in-dash memory card reader, too.

Multifunction steering wheel. Wrapped in soft Premium leather, the 3-spoke wheel places audio, Bluetooth® and many other controls close at hand. The E 550 Coupe adds paddle shifters.

E 550 Coupe shown with Almond Beige interior, Burl Walnut wood trim and optional Appearance and Premium 2 Packages. Please see endnotes in back of brochure.



امداد خودرو فارما

تلفن مشاوره روزی: ۰۲۱-۸۸۸۶۲۰۸۵

FarmaSOS.com

E-Class options and packages. Every E-Class comes generously equipped with standard features and systems to enhance every drive with performance, luxury and security – from their automatic light-sensing headlamps to their LED taillamps. Refinements include digital dual-zone climate control, rain-sensing windshield wipers, auto-dimming mirrors and 14-way power front seats with a 4-way power steering column and memory system. To tailor your E-Class even more precisely to your wish list, a wide selection of innovations, enhancements and conveniences are offered as individual options, or packaged together at a significant savings over their individual value.

For more information, visit www.mbusa.com/e-class



E 350 Sport Sedan shown with optional Iridium Silver metallic paint.

امداد خودرو فارما
تلفن شبانه روزی: ۰۸۵-۸۸۸۶۲۰۲۱
FarmaSOS.com

E 350	E 350 BlueTEC	E 550	
INDIVIDUAL SEDAN OPTIONS			
<input type="checkbox"/>	<input type="checkbox"/>	<input type="checkbox"/>	Panorama sunroof
<input type="checkbox"/>	<input type="checkbox"/>	<input type="checkbox"/>	Night View Assist PLUS with Pedestrian Detection ⁹
<input type="checkbox"/>	<input type="checkbox"/>	<input type="checkbox"/>	PARKTRONIC with Parking Guidance
<input type="checkbox"/>	<input type="checkbox"/>	<input type="checkbox"/>	Rear Seat Entertainment system
<input type="checkbox"/>	<input type="checkbox"/>	<input type="checkbox"/>	Wood/leather steering wheel (Luxury Sedans only)
<input type="checkbox"/>	<input type="checkbox"/>	<input type="checkbox"/>	Drive-Dynamic multicontour front seats with massage
<input type="checkbox"/>	<input type="checkbox"/>	<input type="checkbox"/>	Split-folding rear seats
<input type="checkbox"/>	<input type="checkbox"/>	<input checked="" type="checkbox"/>	Leather upholstery
<input type="checkbox"/>	-	<input type="checkbox"/>	4MATIC all-wheel drive ¹
<input type="checkbox"/>	<input type="checkbox"/>	<input type="checkbox"/>	Rear side-impact air bags
<input type="checkbox"/>	<input type="checkbox"/>	-	Heated front seats
<input type="checkbox"/>	<input type="checkbox"/>	<input type="checkbox"/>	Metallic paint
SEDAN OPTION PACKAGES			
<input type="checkbox"/>	<input type="checkbox"/>	<input type="checkbox"/>	Premium 1 Package: <ul style="list-style-type: none"> • Hard-drive-based navigation¹⁴ • Enhanced voice control for audio, telephone and navigation • harman/kardon LOGIC7[®] surround-sound system with Dolby[®] Digital 5.1 • 6GB hard drive with Music Register for upload of MP3 files • Gracenote[®] media database and Zagat[®] Survey ratings including restaurants, hotels and golf courses • HD Digital Radio[®] • iPod[®]/MP3 media interface (in glovebox)¹⁵ • SIRIUS[®] Satellite Radio¹³ with SIRIUS Traffic[™] • Bluetooth interface for hands-free calling¹² • Heated front seats (Heated and Active Ventilated on E 550) • Power rear window sunshade • Rear view camera¹⁰
<input type="checkbox"/>	<input type="checkbox"/>	<input type="checkbox"/>	Premium 2 Package: Includes all items in Premium 1 Package, plus: <ul style="list-style-type: none"> • Bi-Xenon headlamps with Active Curve Illumination • Adaptive Highbeam Assist • Headlamp washing system • LED Daytime Running Lamps • KEYLESS-GO • Electronic trunk closer
<input type="checkbox"/>	-	<input checked="" type="checkbox"/>	Wheel Package (Sport Sedans only): <ul style="list-style-type: none"> • 18" AMG twin 6-spoke wheels¹¹ • 3-spoke sport steering wheel
<input type="checkbox"/>	<input type="checkbox"/>	<input type="checkbox"/>	Driver Assistance Package: <ul style="list-style-type: none"> • DISTRONIC PLUS with PRE-SAFE[®] Brake² • Blind Spot Assist⁸ • Lane Keeping Assist⁶

E 350	E 550	
INDIVIDUAL COUPE OPTIONS		
<input type="checkbox"/>	<input type="checkbox"/>	Wood/leather steering wheel and shift knob
<input type="checkbox"/>	<input type="checkbox"/>	Heated front seats
<input type="checkbox"/>	<input type="checkbox"/>	Rear side-impact air bags
<input type="checkbox"/>	<input type="checkbox"/>	Metallic paint
<input type="checkbox"/>	<input type="checkbox"/>	Tele Aid System
<input type="checkbox"/>	<input type="checkbox"/>	Premium leather upgrade
COUPE OPTION PACKAGES		
<input type="checkbox"/>	<input type="checkbox"/>	Premium 1 Package: <ul style="list-style-type: none"> • Hard-drive-based navigation¹⁴ • Enhanced voice control for audio, telephone and navigation • harman/kardon LOGIC7[®] surround-sound system with Dolby Digital 5.1 • 6GB hard drive with Music Register for upload of MP3 files • Gracenote[®] media database and Zagat[®] Survey ratings including restaurants, hotels and golf courses • HD Digital Radio • iPod/MP3 media interface (in glovebox)¹⁵ • SIRIUS Satellite Radio¹³ with SIRIUS Traffic[™] • Bluetooth interface for hands-free calling¹² • Heated front seats • Power rear window sunshade • Rear view camera¹⁰
<input type="checkbox"/>	<input type="checkbox"/>	Premium 2 Package: Includes all items in Premium 1 Package, plus: <ul style="list-style-type: none"> • Bi-Xenon headlamps with Active Curve Illumination • Adaptive Highbeam Assist • Headlamp washing system • LED Daytime Running Lamps • LED front turn indicators • KEYLESS-GO • Heated and Active Ventilated front seats
<input type="checkbox"/>	<input type="checkbox"/>	DISTRONIC PLUS Package: <ul style="list-style-type: none"> • DISTRONIC PLUS with PRE-SAFE[®] Brake² • PARKTRONIC with Parking Guidance
<input type="checkbox"/>	<input type="checkbox"/>	Appearance Package: <ul style="list-style-type: none"> • 18" AMG twin 6-spoke wheels¹¹ • Multicontour front seats • Rubber-studded stainless steel pedals • Paddle shifters (standard on E 550 Coupe) • Perforated front brake discs with painted calipers (standard on E 550 Coupe) • Sport-tuned AGILITY CONTROL suspension (E 350 Coupe only) • AMG sport steering wheel (E 550 Coupe only)

● Standard ○ Optional - Not available

Color and Trim

SEDAN AND COUPE

INTERIOR UPHOLSTERY¹⁶



Black
Sport Sedan
Luxury Sedan
Coupe



Almond/Black
Sport Sedan



Ash/Black
Sport Sedan



Natural Beige/Black
Sport Sedan

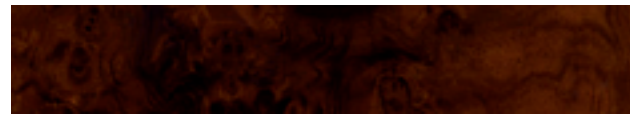


Almond Beige
Luxury Sedan
Coupe



Ash
Luxury Sedan
Coupe

HIGH-GLOSS WOOD TRIM

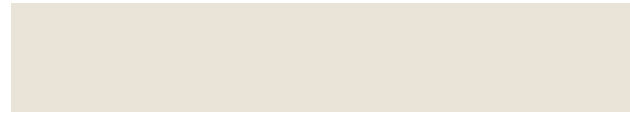


Burl Walnut
Sport Sedan¹⁹
Luxury Sedan
Coupe

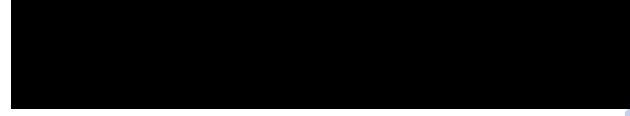


Black Ash
Sport Sedan

EXTERIOR PAINTWORK, NON-METALLIC



Arctic White
Sport Sedan
Luxury Sedan
Coupe



Black
Sport Sedan
Luxury Sedan
Coupe



Mars Red
Coupe

EXTERIOR PAINTWORK, METALLIC¹⁷



Capri Blue
Sport Sedan
Luxury Sedan
Coupe



Iridium Silver
Sport Sedan
Luxury Sedan
Coupe



Obsidian Black
Sport Sedan
Luxury Sedan
Coupe



Palladium Silver
Sport Sedan
Luxury Sedan
Coupe



Quartz Blue
Sport Sedan
Luxury Sedan
Coupe



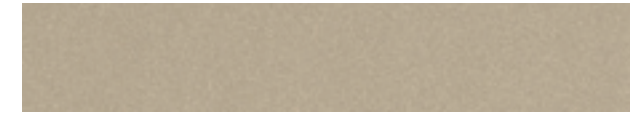
Steel Grey
Sport Sedan
Luxury Sedan
Coupe



Indium Grey
Sport Sedan
Luxury Sedan



Jade Green
Sport Sedan
Luxury Sedan



Pearl Beige
Sport Sedan
Luxury Sedan



Diamond White¹⁸
Coupe

ENDNOTES

- 1 Availability of E 350 BlueTEC and 4MATIC models is delayed. See dealer for details.
- 2 DISTRONIC PLUS adaptive cruise control is no substitute for active driving involvement. It does not react to stationary objects, nor recognize or predict the curvature and lane layout of the road or the movement of vehicles ahead. It is the driver's responsibility at all times to be attentive to traffic and road conditions, and to provide the steering, braking and other driving inputs necessary to retain control of the vehicle. Drivers are cautioned not to wait for the DISTRONIC Proximity Warning System before braking, as that may not afford sufficient time and distance to brake safely. After braking the car for stopped traffic ahead, system resumes automatically only if traffic pauses for less than 3 seconds.
- 3 Driving while drowsy or distracted is dangerous and should be avoided. ATTENTION ASSIST may be insufficient to alert a fatigued or distracted driver of lane drift and cannot be relied on to avoid an accident or serious injury.
- 4 PRE-SAFE® closes the side windows and sunroof when the system's sensors detect side movement that suggests a possible accident.
- 5 Optional on Sedans, not available on Coupes. See Options and Packages listing.

- 6 Driving while drowsy or distracted is dangerous and should be avoided. Lane Keeping Assist may be insufficient to alert a fatigued or distracted driver of lane drift and cannot be relied on to avoid an accident or serious injury.
- 7 WARNING: THE FORCES OF A DEPLOYING AIR BAG CAN CAUSE SERIOUS OR FATAL INJURIES TO A CHILD UNDER AGE 13. THE SAFEST SEATING POSITION FOR YOUR CHILD IS IN THE REAR SEAT, BELTED INTO AN APPROPRIATE, PROPERLY INSTALLED CHILD SEAT, OR CORRECTLY WEARING A SEAT BELT IF TOO LARGE FOR A CHILD SEAT. SEE OPERATOR'S MANUAL FOR ADDITIONAL WARNINGS AND INFORMATION ON AIR BAGS, SEAT BELTS AND CHILD SEATS.
- 8 Blind Spot Assist may not be sufficient to avoid all accidents involving vehicles in your blind spot and does not estimate the speed of oncoming vehicles. It should not be used as a sole substitute for driver awareness and checking of surrounding traffic conditions.
- 9 Option requires Premium 2 Package. Night View Assist does not replace the use of headlamps and should not be used as the primary visual source for the driver.
- 10 Rear view camera does not audibly notify driver of objects outside the system's field of vision, which includes nearby objects, and is not a substitute for actively checking around the vehicle for any obstacles.

- 11 Lower aspect ratio tires and accompanying wheels provide substantially increased treadwear, increased tire noise and reduced ride comfort. Serious wheel and tire damage may occur if the vehicle is operated on rough or damaged road surfaces or upon encountering road debris or obstacles. These tires are not designed for use on snow and ice. Winter tires mounted on appropriately sized and approved wheels are recommended for driving in those conditions.
- 12 Bluetooth® interface does not provide phone charging or external antenna. Voice interactivity feature is dependent on selected handset. Visit www.mbusa-mobile.com for details. Phone sold separately. See dealer for a list of approved compatible phones.
- 13 SIRIUS® hardware and subscription required. Other fees and taxes may apply. Subscription governed by SIRIUS Terms & Conditions at sirius.com/serviceterms. Prices and programming are subject to change. SIRIUS Radio U.S. service only available in the 48 contiguous United States and the District of Columbia. Service available in Canada; see www.siriSCANADA.ca.
- 14 While the navigation system provides directional assistance, the driver must remain focused on safe driving behavior, including paying attention to traffic and street signs. The driver should utilize the system's audio cues while driving and should only

- consult the map or visual displays once the vehicle has been stopped in a safe place. Maps do not cover all areas or all routes within an area.
- 15 All iPod® devices are sold separately. Feature not compatible with iPod Shuffle. See dealer for details.
 - 16 M-B Tex upholstery standard on E 350 and E 350 BlueTEC Sedans. Leather upholstery standard on all Coupes and E 550 Sedans, optional at extra cost on E 350 and E 350 BlueTEC Sedans.
 - 17 Extra-cost option.
 - 18 Limited availability. See dealer for details.
 - 19 Burl Walnut wood trim only available in combination with Almond/Black interior on E-Class Sport Sedans.
 - 20 Durability is based on longevity, as determined by MBUSA sales records 1952-2008 and R.L. Polk & Co. Vehicles In Operation as of 2008.

امداد خودرو فارما

تلفن شماره روزی: ۰۸۵-۸۸۸۶۲۰۲۱

FarmaSOS.com



For a small blue planet


The 124-year heritage of Mercedes-Benz is rich with evidence of our respect for the earth and its inhabitants, both in the vehicles we make and in the ways we make them. We introduced the world's first CFC-free car, not just in its air conditioning but throughout its entire manufacturing process. We've been using water-borne paints for years, and source the wood for our interior trim from responsibly sustained forests. We've been pioneering advanced powertrains for generations, from today's new hybrid models and 50-state clean diesels to the fuel cell vehicles of tomorrow. Mercedes-Benz is also legendary for producing automobiles of extraordinary durability, with 88% of the vehicles sold in the last 20 years – and a remarkable 75% of all the vehicles we've ever sold in the U.S. – still on the road.²⁰ After all, it takes virtually the same amount of energy to build vehicles that last as ones that won't.

Our new, more compact brochures consume fewer resources as well, starting with the recycled coated paper they're printed on. It contains at least 10% post-consumer waste, has earned Chain of Custody certifications from the Sustainable Forestry Initiative® (SFI) and Forest Stewardship Council® (FSC), and is produced using Green-e® certified renewable energy. And the brochures are printed in facilities that purchase renewable energy – including wind power, solar energy and hydropower – and use technologies that reduce both their carbon footprint and the emission of volatile organic compounds (VOCs) into our small blue planet's atmosphere. Caring innovation comes from blue-sky thinking – sometimes quite literally. It's what you can expect from the automaker who's been sharing this planet with you for longer than anyone.

This is who we are. This is Mercedes-Benz.

©2009 Mercedes-Benz USA, LLC • One Mercedes Drive, Montvale, NJ 07645 • 1-800-FOR-MERCEDES • www.mbusa.com

Marketing Communications. All illustrations and specifications contained in this brochure are based on the latest product information available at the time of publication. Mercedes-Benz reserves the right to make changes at any time, without notice, to colors, materials, equipment, specifications and models. Any variations in colors shown are due to reproduction variations of the printing process. Illustrations may include test situations. Some vehicles may be shown with non-U.S. equipment. Some vehicles are shown with optional equipment. harman/kardon and LOGIC7 are registered trademarks of Harman International Industries, Inc. iPod is a registered trademark of Apple Computer, Inc. SIRIUS, XM and all related marks and logos are trademarks of SIRIUS XM Radio Inc. and its subsidiaries. All rights reserved. Bluetooth is a registered trademark of Bluetooth SIG, Inc.

 Printed in U.S.A./175 MC-09-848



Mixed Sources
Product group from well-managed
forests, controlled sources and
recycled wood or fiber
www.fsc.org Cert no. SW-COC-001795
© 1996 Forest Stewardship Council

