

2011 G-Class



Mercedes-Benz

Introducing the 2011 G-Class.

For more information, please visit MBUSA.com/G-Class

Peerless. Fearless. Timeless.

A legend you can believe.

تلفن شبانه روزی: ۰۲۱-۸۸۸۶۲۰۸۵

What drives us to create a vehicle with seemingly limitless aptitude and unwavering fortitude? The same spirit of adventure that dared to put man in motion 125 years ago with a radical self-propelled invention called a "Motorwagen," more commonly known as the very first automobile. Ever since that day, the engineers of Mercedes-Benz have repeatedly surpassed the boundaries and reimagined the possibilities not just of their own vehicles, but for automobiles across the globe. More than 30 years ago, they set out to develop a vehicle that offered unmatched capability along with unexpected civility. The result was a vehicle so true to its objectives, so confident in its performance, and so comfortable in its mission that it proved to be as endearing as it is enduring. And after three decades of production and technological evolution, it remains undaunted, undiluted, and unceasingly contemporary. Beneath its iconic design, it continues to combine king-of-the-hill competence with state-of-the-art innovation, in a vehicle that is still lovingly crafted almost entirely by hand. The 2011 G-Class is living proof that how far you can go is a direct reflection of where you come from. It's a legend you can believe in, and live for yourself.





G 550 shown on front cover with Iridium Silver metallic paint. G 55 AMG shown on back cover with Flint Grey metallic paint. G 550 shown above with Flint Grey metallic paint.



G550 shown with Palladium Silver metallic paint. Please see endnotes at back of brochure.

To appreciate its beauty, start on any surface. Of the earth.

Always in style. Always in its element. The perpetual appeal of the G-Class comes not just from the honest, functional proportions of its design, but from the epic proportions of the character within. Its capable, versatile 4-wheel drive system is both technologically advanced and a purist's delight. On the road, its 4-wheel Electronic Traction System (4-ETS) continually transmits the torque of its potent V-8 to the wheels with the best grip—even if that's only one wheel—to get you going on virtually any surface! As you make your way off-road, three sequentially lockable differentials offer increasingly masterful capability.² And in the G 550, a 7-speed automatic transmission³ teams with a 2-speed transfer case to provide the broadest span of gear ratios of any SUV. In a G-Class, the deeper you delve, the more beautiful it gets.



Off-road prowess. Each of the three differentials can be locked in sequence—center, rear, then front—via a set of buttons on the dash. With more than eight inches of both ground clearance and suspension travel, along with steep angles of approach and departure, the G-Class can venture where most other SUVs can only dream. It can even climb or descend an 80% incline, and handle a 54% lateral slope.⁴

On-road presence. The muscular growl of the 382-hp V-8 in the G 550 comes from its ample 391 lb-ft of torque and a true dual-sidepipe exhaust system. Chrome-tipped exhausts on the G 55 AMG declare the dominance of its supercharged 500-hp V-8. With gas-charged shock absorbers, coil springs and rigid axles, every G-Class balances its extreme deftness off-road with nimble dexterity around town and in corners.

Overall protection. From its Bi-Xenon headlamps with washers to its advanced Tire Pressure Monitoring System, the G-Class looks out for its occupants. Four air bags offer 6-way protection, including window curtain air bags for both rows of seats.⁵ Both the front and outboard rear seat belts are equipped with Emergency Tensioning Devices (ETDs), along with belt force limiters for the front seats.



تلفن شبانه روزی: ۰۲۱-۸۸۸۶۲۰۸۵

FarmaSOS.com



Every exploration leads to an advanced civilization.

A world of convenience. All at your command. Whether your next excursion is to the top of a mountain or a top-rated resort, every G-Class is extensively outfitted to ease your journey. Its entertainment and information systems combine advanced technology with intuitive controls. Surround-sound audio offers a bounty of listening choices, from SIRIUS® Satellite Radio to storage of your own digital music on an in-dash hard drive. Voice-controlled navigation helps you venture around the country or circumvent local traffic. While a heated windshield, heated mirrors and a rear view camera help you keep an eye on your immediate surroundings. Wherever you explore in the G-Class, civilized living is yours to discover.

Wood/leather multifunction steering wheel. Convenient buttons put the most frequently used features right at your fingertips. You can adjust the audio system, use the Bluetooth® wireless interface,⁶ and thumb through the various screens of the multifunction display in the instrument cluster—all without taking your hands from the polished wood and Premium leather trim of the electrically heated steering wheel.

harman/kardon audio. A standard 11-speaker LOGIC7® audio system outputs 610 watts of Dolby® Digital 5.1 surround sound. Your world of entertainment includes HD Radio™ stations, SIRIUS® Satellite Radio,⁷ iPod® integration,⁸ a 4GB Music Register for storing MP3 files, a 6-DVD/CD changer and a memory card reader.

Navigation with live traffic. The advanced navigation system⁹ features a fast 40GB hard drive, a vivid 4.5" color display, live SIRIUS Traffic™ updates, and Zagat® Survey ratings for restaurants, hotels and golf courses. Enhanced Voice Control lets you find addresses by speaking normally, with no need to spell out city names.

Visionary technology. An armada of innovations enhances your outward vision. The windshield is electrically heated, to help clear the glass as soon as you start the engine on a cold morning. The large, power-folding side mirrors are heated as well. The automatic Bi-Xenon headlamps turn on in darkness. The windshield wipers adapt to the rainfall. When you're backing up, a rear view camera¹⁰ and Rear Park Assist system team up to help guide you. And if the front wipers are on when you shift to Reverse, the rear-window wiper sweeps automatically, too.

It feels like no other SUV. Because it's built like no other SUV.

Painstakingly crafted. For your driving pleasure. The unique way a G-Class feels is the direct result of the way it's made. From its rigid, wax-flooded ladder frame to its supple Premium leather upholstery, every G-Class is welded, bolted, wired, fitted and finished by hand. The pride, precision and personal attention of the human touch is one reason it delivers such lasting comfort. Abundant luxury is another. Four heated seats, plus Active Ventilated front seats, conquer any climate. A leather-trimmed dash, ambient cabin lighting and hand-polished wood trim create a soothing environment. And its bank-vault-solid construction and limber suspension carry it all with confident grace. The G-Class is hand-built to ruggedly endure the most punishing conditions. It's also lavishly, lovingly crafted to reward you along the way.



Rugged. Every G-Class is crafted almost entirely by hand in Graz, Austria. Its galvanized steel body is welded at over 6,000 points for strength. Its rigid frame is treated with 50 liters of wax to resist corrosion. From looms to wiring to outfitting its luxurious, roomy cabin, each vehicle it takes over 40 hours to build. But it creates a lifetime of durability.

Refined. Proven in some of the world's most unforgiving environments, the automatic climate control offers individual left and right comfort zones plus dual rear-cabin air vents. It also filters dust and pollen from the incoming air. Even the heated rear window shows awareness of its surroundings, staying on longer when ambient temperatures are colder.

Relaxed. Multicontour, heated and Active Ventilated front seats offer precise support and all-season comfort. Each seat also power-adjusts 10 ways and features a 3-position memory, including the driver's power steering column and side mirror positions. The heated rear seats fold down in a $\frac{2}{3}:\frac{1}{3}$ split to create up to 79.5 cu ft of cargo space.¹¹



امداد خودرو فارس

تلفن شبانه روزی: ۰۲۱-۸۸۸۶۲۰۸۵

FarmaSOS.com

G55 AMG shown with *designo* Black leather interior and *designo* Natural Maple wood trim. Please see endnotes at back of brochure.



The G 55 AMG. Handcrafted horsepower.

One man, one engine. Beyond all the racing trophies earned in the storied legacy of AMG—the high-performance arm of Mercedes-Benz—one small plaque tells an even greater story. Affixed atop each AMG engine, it bears the signature of the single master technician who assembled it from race-proven components with his own hands. The superlatively engineered vehicle which houses this engine will go forth to achieve imposing results in virtually every dimension of performance. But no matter what numbers it generates—horsepower and pound-feet, mph and rpm, or seconds and g's—every measure of a G 55 AMG starts with “one.”

AMG-developed 5.5-liter V-8. A hand-built vehicle with a handcrafted heart, the supercharged, liquid-to-air intercooled V-8 of the G 55 AMG outpours an even 500 hp @ 6,100 rpm, and an even more torrential 516 lb-ft of torque @ 2,700–4,000 rpm. Accompanied by the unmistakable rumble of a true dual-sidepipe AMG exhaust system, 60 mph arrives in a lightning-quick 5.4 seconds.¹²

Reinforced transmission. The AMG-calibrated 5-speed automatic transmission easily manages the copious torque output of the G 55 AMG engine. Driver-adaptive programming delivers crisp shifts, while Touch Shift control allows manual-style shifting. A “Shift into Optimum Gear” feature provides direct downshifting to the ideal gear for passing or engine-braking down steep inclines.

Enlarged brakes and wheels. Massive 4-wheel ventilated disc brakes feature 13.8" composite discs in front and 13.0" discs at the rear. Lightweight, highly rigid 19 × 9.5" AMG 5-spoke aluminum-alloy wheels fill the exclusive flared wheel arches with beefy 275/55 R19 all-season tires.

Exquisitely finished. The G 55 AMG is fully equipped, with only color and trim requiring your selection. Hand-stitched *designo* leather and hand-selected *designo* Natural Maple wood enrich the cabin, while paint choices include four exclusive *designo* colors in gloss or matte finishes.

Learn more at MBUSA.com/AMG





ایجاد خودرو و بارها

تلفون: ۰۲۱-۸۸۴۲۰۸۵

FarmaSOS.com



mbrace
Your World, From Your Car

Connecting your life.

Stay in touch with mbrace. Your vehicle is more than a source of enjoyment, it's a vital part of everyday living. The Mercedes-Benz mbrace™ system can make it easier—from planning a trip, to remembering where you parked, to handling an unexpected emergency.¹³ You can access a world of security, convenience and destination planning services from your vehicle, your computer or even your smartphone. With advanced, reliable technology, plus 24-hour support from helpful experts, mbrace helps keep you, your life and your Mercedes-Benz connected.



From your vehicle. Three buttons inside your Mercedes-Benz can connect you to emergency services, our 24-hour Customer Assistance Center, or our Roadside Assistance service.¹⁴ Numerous mbrace services are also integrated with your vehicle's standard COMAND navigation system.



From your smartphone. The mbrace Mobile Application for your iPhone® or BlackBerry® lets you locate your vehicle from up to a mile away, remote-unlock its doors, find a nearby dealer, and contact Roadside Assistance, Customer Service or even Mercedes-Benz Financial with a touch.¹⁵



From your computer. Beyond the support you'll find at mbrace.MBUSA.com, the Search & Send feature lets you look up destinations on Google™ Maps using any web browser. You can then send the address directly to your vehicle's navigation system with just a few clicks.

Mercedes-Benz mbrace™ packages.

Support—when and where you need it. Two service packages are available, each including an attractive complimentary trial period allowing you to experience the many ways that Mercedes-Benz mbrace can help connect and protect you and your vehicle. The standard **mbrace Package (::)** includes all of the Safety and Security services, as well as Search & Send,[™] one of the most popular Navigation and Destination Planning features. It also includes four reassuring Convenience features, such as the ability to locate your vehicle using your smartphone. The **mbrace PLUS Package (+)** offers unlimited use of our expert Concierge services, spoken turn-by-turn Route Assistance—even if your car does not have a navigation system—plus traffic and weather reports based on your location.



Safety and Security



Automatic Collision Notification :: +

With mbrace, your vehicle can call for help even if you can't. If an air bag or Emergency Tensioning Device is activated, mbrace initiates a call to the Mercedes-Benz Emergency Response Center to notify them of the incident, and provide information on your vehicle and its location. A Customer Specialist will then attempt to make voice contact with you. If you request help, or do not respond, they will notify local emergency response services, and stay on the line until help arrives.



SOS/Emergency Call :: +



Roadside Assistance Connection :: +



Stolen Vehicle Location Assistance :: +



Automatic Alarm Notification :: +



Crisis Assist :: +



Safe Ride :: +



Navigation and Destination Planning



Search & Send :: +

A convenient way to plan your trips before you leave your home or office, Search & Send lets you use Google Maps to find a destination online, then send it directly to your Mercedes-Benz. Once you're in your vehicle, just push the *i*-Button and the address will be downloaded into your vehicle's navigation system. You can then start route guidance immediately, or save the information in your navigation system's memory.



Point of Interest Destination Download +



Route Assistance +



Location-Based Traffic +



Location-Based Weather +



Convenience



Mercedes-Benz Concierge +

Subscribing to mbrace PLUS gives you unlimited access to Mercedes-Benz Concierge services, a network of experienced, professional personal assistants who can fulfill virtually any request, around the clock, right in your vehicle.



Remote Door Unlock :: +



Vehicle Finder (via Mobile Application only) :: +



Dealer Connect :: +



Vehicle Information :: +

:: mbrace Package features
+ mbrace PLUS Package features

Mercedes-Benz mbrace is the evolution of our existing groundbreaking in-vehicle services, offering national support along with expanded and enhanced features. To learn more about mbrace, see your dealer, call 866-990-9007 or visit MBUSA.com/mbrace.



امداد خودرو فارما

تلفن شبانه روزی: ۰۲۱-۸۸۸۶۲۰۸۵

FarmasOS.com

G 550 shown with Arctic White paint.

Created to reach the end of the earth. And, perhaps, of time.

Designed, quite simply, to endure. Long before SUVs were popular, Mercedes-Benz set out to create a vehicle with an unprecedented spectrum of capabilities: the reliability, robustness and capability for industrial, municipal and military use, along with the comfort and safety for everyday people to enjoy every day. Its design would be functional, both in its operation and its aesthetic—with a chassis and 4-wheel drive system matching extreme off-road ability with on-road agility. It would go on to win coveted awards, grueling endurance rallies, and devoted customers—from civilians who appreciate its capability, composure and craftsmanship, to the Swiss Army, who are famous for appreciating versatile equipment. After three decades of evolution, the legendary “G” remains true to its roots, and to its drivers.

A G-CLASS RETROSPECTIVE

- 1972** Development of a new type of off-road vehicle—one that will excel both in the toughest terrain and yet provide the comfort and safety engineering for which Mercedes-Benz is known—begins in a cooperative agreement between Daimler-Benz and Steyr-Daimler-Puch in Graz, Austria. Mercedes-Benz engineers in Stuttgart focus on the design and testing of the new vehicle, while the team in Graz develops the production plans.
- 1973** The first wooden model is presented to Daimler-Benz management.
- 1974** The first driveable prototype vehicle begins testing around the globe—from the coalfields of Germany, to the Sahara Desert, to the Arctic Circle.
- 1975** Construction commences on a new production facility in Graz, where the new cross-country vehicle will be assembled nearly entirely by hand.
- 1979** Production of the “G-Model” begins in Graz.
- 1980** The Vatican takes delivery of a specially made G-Model outfitted with a clear thermoplastic top. After serving the Pope for years, the “Papa-G” or “Popemobile” will take up permanent residence at the Mercedes-Benz Museum in Stuttgart, Germany.
- 1981** The first major refinements include an automatic transmission, air conditioning, an auxiliary fuel tank, protective headlamp grilles and a cable winch.
- 1982** Fuel injection becomes available, along with more comfortable and supportive front seats, auxiliary heating, wider tires and fender flares.
- 1983** A rally-prepared and modified 280 GE wins the torturous Paris–Dakar Rally.
- 1985** Differential locks, central door locking and a tachometer become standard.
- 1986** The 50,000th G-Model is handcrafted at the Graz facility.
- 1987** Power windows, a power antenna and a combined partition net and luggage cover join the optional equipment roster.
- 1989** At the 10th anniversary of the G-Model, a new model variant with permanent 4-wheel drive, a luxurious wood-trimmed interior and optional Antilock Braking System (ABS) debuts at the Frankfurt International Motor Show. Production begins the following April.
- 1992** A new sub-series for professional users—from landscapers and foresters to fire and rescue operations—begins production. The civilian model offers cruise control, a stainless-steel spare-tire cover, running boards and Burl Walnut wood interior trim. And the 100,000th G-Model is built in Graz.
- 1994** The model line is officially renamed the G-Class. Ventilated front disc brakes and a driver’s air bag become standard.
- 1996** The automatic transmission is now an electronically controlled 5-speed unit. Headlamp washers, cruise control and a front passenger’s air bag are added.
- 1998** The range-topping G 500 with a 296-hp V-8 is introduced for series production.
- 1999** A limited run of V-8 powered “G 500 Classic” special editions marks the 20th anniversary. A multifunction steering wheel is added to all models. Later in the year, the new G 55 AMG debuts as the most powerful G-Class yet, with 354 hp.
- 2001** The new millennium welcomes a series of refinements coinciding with the U.S. market launch of the G-Class. New alloy wheels, a chrome grille and body-color bumpers surround a more luxurious cabin. New dynamic control systems include the Electronic Stability Program (ESP®), Brake Assist and the 4-wheel Electronic Traction System (4-ETS).
- 2004** The G 55 AMG is upgraded with a supercharged V-8 engine developing 476 hp, as the G-Class celebrates its 25th anniversary.
- 2006** In Siberia, a documentary filmmaker is the first foreigner to reach the world’s coldest region with a passenger vehicle in winter, driving a stock G 500 nearly 19,000 km without a single breakdown, in temperatures as frigid as –63° F.
- 2007** The output of the G 55 AMG is raised to an even 500 hp. Bi-Xenon headlamps, corner-illuminating front foglamps and new scratch-resistant nano-particle paint finishes are offered for the first time.
- 2008** More-refined instrumentation and controls grace the G-Class cabin, along with such new-generation technology as the COMAND system with hard-drive-based navigation, a rear view camera, voice control, Bluetooth® and a Tire Pressure Monitoring System. The Vatican receives a new white “Popemobile” based on a G 500.
- 2009** The G-Class celebrates its 30th birthday as it enters model-year 2010, with over 200,000 units having been handcrafted in Graz since the start of production.
- 2011** Even through countless evolutionary changes, the G-Class remains unwaveringly true not just to its original design ethic and handcrafted construction, but to its original promise: a seemingly limitless, and clearly timeless, vehicle for the world.

Build your own G-Class at MBUSA.com/G-Class

	G 550	G 55 AMG
SPECIFICATIONS		
Engine	5.5-liter V-8 382 hp @ 6,000 rpm 391 lb-ft net torque @ 2,800–4,800 rpm	5.5-liter supercharged V-8 500 hp @ 6,100 rpm 516 lb-ft net torque @ 2,750–4,000 rpm
Transmission	7-speed automatic with Touch Shift	5-speed automatic with Touch Shift
Transfer case	2-speed	2-speed
Wheels	18" twin 5-spoke	19" AMG 5-spoke
Tires	265/60 R18 all-season	275/55 R19 all-season
Suspension	Rigid front and rear axles with coil springs and gas-pressurized shock absorbers	Rigid front and rear axles with coil springs and gas-pressurized shock absorbers
Drivetrain	4-wheel drive with 3 electromechanically lockable differentials ²	4-wheel drive with 3 electromechanically lockable differentials ²

	G 550	G 55 AMG
DIMENSIONS		
Wheelbase	112.2 in	112.2 in
Overall length	184.5 in (with spare tire and brush guard)	184.5 in (with spare tire and brush guard)
Overall height	76.0 in	76.0 in
Overall width	79.0 in (with mirrors)	79.0 in (with mirrors)
Curb weight	5,622 lbs	5,721 lbs
Headroom	42.2 in, front/40.0 in, rear	42.2 in, front/40.0 in, rear
Legroom	52.5 in, front/41.9 in, rear	52.5 in, front/41.9 in, rear
Shoulder room	53.7 in, front/56.3 in, rear	53.7 in, front/56.3 in, rear
Cargo capacity	45.2 cu ft (behind rear seats, to top of seats) 79.5 cu ft (rear seats folded, floor-to-ceiling)	45.2 cu ft (behind rear seats, to top of seats) 79.5 cu ft (rear seats folded, floor-to-ceiling)

	G 550	G 55 AMG
OFF-ROAD CAPABILITY⁴		
Ground clearance	8.27 in	8.27 in
Fording depth	19.7 in (maximum)	19.7 in (maximum)
Angle of approach	34° (maximum)	34° (maximum)
Angle of departure	29° (maximum)	29° (maximum)
Climbing ability	Up to 80% grade	Up to 80% grade
Lateral tilt angle	Up to 54% grade	Up to 54% grade

ENDNOTES

- No system, regardless of how advanced, can overcome the laws of physics or correct careless driving. Please always wear your seat belt. Performance is limited by available traction, which snow, ice and other conditions can affect. Always drive carefully, consistent with conditions. Best performance in snow is obtained with winter tires.
- ESP, 4-ETS, ABS and Brake Assist do not operate when the differential locks are engaged.
- G 550 equipped with 7-speed automatic transmission. A 5-speed automatic is standard on the G 55 AMG.
- Off-road driving should only be attempted by drivers with the necessary skill, experience and understanding of the vehicle's limits. Locked differentials will limit steering ability. Read Operator's Manual before driving off-road or in deep water.
- WARNING: THE FORCES OF A DEPLOYING AIR BAG CAN CAUSE SERIOUS OR FATAL INJURIES TO A CHILD UNDER AGE 13. THE SAFEST SEATING POSITION FOR YOUR CHILD IS IN THE REAR SEAT, BELTED INTO AN APPROPRIATE, PROPERLY INSTALLED CHILD SEAT, OR CORRECTLY WEARING A SEAT BELT IF TOO LARGE FOR A CHILD SEAT. SEE OPERATOR'S MANUAL FOR ADDITIONAL WARNINGS AND INFORMATION ON AIR BAGS, SEAT BELTS AND CHILD SEATS.
- Bluetooth® interface does not provide phone charging or external antenna. Voice interactivity feature is dependent on selected handset. Visit MBUSA-Mobile.com for details. Phone sold separately. See dealer for a list of approved compatible phones.
- SIRIUS® hardware and subscription required. With the purchase of a new, SIRIUS-enabled vehicle, you'll receive a complimentary 6-month subscription to SIRIUS, courtesy of Mercedes-Benz. Subscription governed by SIRIUS Terms & Conditions available at sirius.com. SIRIUS U.S. Satellite Service available only to those at least 18 years of age in the 48 contiguous United States, DC and Puerto Rico (with coverage limitations). Service available in Canada; see www.siriuscanada.ca.
- All iPod® devices are sold separately. Feature not compatible with iPod Shuffle. See dealer for details.
- While the navigation system provides directional assistance, the driver must remain focused on safe driving behavior, including paying attention to traffic and street signs. The driver should utilize the system's audio cues while driving and should only consult the map or visual displays once the vehicle has been stopped in a safe place. Maps do not cover all areas or all routes within an area.
- Rear view camera does not audibly notify driver of nearby objects and is not a substitute for actively checking around the vehicle for any obstacles or people. Images displayed may be limited to camera field of view, weather, lighting conditions and the presence of dirt, ice or snow on the camera.
- Unsecured cargo can become hazardous in a collision. Always secure cargo using the floor-mounted tie-downs.
- Stated rates of acceleration are based upon manufacturer's track results and may vary depending on model, environmental and road surface conditions, driving style, elevation and vehicle load.
- All Mercedes-Benz mbrace™ services operate only where cellular and Global Positioning Satellite signals are available, which are provided by third parties and not within the control of Mercedes-Benz USA, LLC. An mbrace Package trial period is offered on new, Certified Pre-Owned and pre-owned sales and leases at an authorized Mercedes-Benz dealer. Subscriber Agreement is required for service to be active. Some services are only available on select vehicles. Your PIN is required in order to use certain services. See your dealer or MBUSA.com/mbrace for details, including a list of compatible smartphones.
- Roadside Assistance repairs may involve charges for parts, service and towing. Vehicle must be accessible from main roads. Depending on the circumstance, these services may be provided by an outside provider, courtesy of Mercedes-Benz Roadside Assistance. Restricted roadways, acts of nature and vehicle accessibility may limit our ability to provide services to you. For full details, eligibility requirements, and limitations/exclusions of Sign and Drive services, as well as the Roadside Assistance Program, please see your dealer.
- mbrace is compatible with select Apple iPhone® models running OS 2.2.1 or later, BlackBerry® Curve™ 8300 Series models with GPS, and BlackBerry 8820 and 8830 models running OS 4.5 or later. Please visit MBUSA.com/mbrace for more information.
- Extra-cost option.
- Durability is based on longevity, as determined by MBUSA sales records 1952–2008 and R.L. Polk & Co. Vehicles In Operation as of 2008.

Color and Trim

PAINTWORK, METALLIC



Obsidian Black



Flint Grey



Palladium Silver



Iridium Silver



Verde Brook



designo Mocha Black
(G 55 AMG only)



designo Graphite
(G 55 AMG only)

LEATHER UPHOLSTERY



Black (G 550 only)



Chestnut/Black (G 550 only)



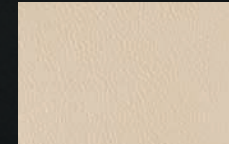
Ash/Black (G 550 only)



designo Black
(G 55 AMG only)



designo Light Brown
(G 55 AMG only)

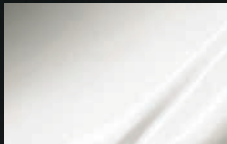


designo Porcelain
(G 55 AMG only)

PAINTWORK, NON-METALLIC

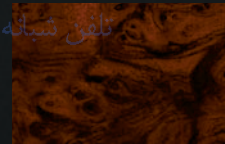


Black



Arctic White

HIGH-GLOSS WOOD TRIM



Burl Walnut (G 550 only)



designo Natural Maple
(G 55 AMG only)

PAINTWORK, MATTE



Matte *designo* Magno
Night Black¹⁶
(G 55 AMG only)



Matte *designo* Magno
Platinum¹⁶
(G 55 AMG only)

تلفون شمېانه روزی: ۰۲۱-۸۸۸۶۲۰۸۵

FarmaSOS.com



For a small blue planet

For 125 years – longer than any other automaker – we've been sharing this planet with you. Respecting it, and protecting it, have long been a part of our vision and ambition. We introduced the world's first CFC-free car, not just in its air conditioning but in its entire manufacturing process. We've been using water-borne paints for years, and source the wood for our interior trim from responsibly sustained forests. We've been pioneering advanced powertrains for generations, from today's hybrid models and 50-state clean diesels to the fuel cell vehicles of tomorrow. Mercedes-Benz is also legendary for producing automobiles of extraordinary durability, with 88% of the vehicles sold in the last 20 years – and a remarkable 75% of the vehicles we've ever sold in the U.S. – still on the road.¹⁷ After all, it takes virtually the same amount of energy to build vehicles that last as ones that won't. Even our brochures consume fewer resources. Each e-brochure has been designed to be enjoyed on virtually any computer screen, even a laptop, so you need never print a paper copy at all. By doing so, together we are saving the energy associated with conventional printing, and eliminating the waste and emissions as well. Everything we engineer is born from the motivation and ingenuity to make things better. Passion with compassion – that is what drives us.



©2010 Mercedes-Benz USA, LLC • One Mercedes Drive, Montvale, NJ 07645 • 1-800-FOR-MERCEDES • MBUSA.com

Marketing Communications. All illustrations and specifications contained in this brochure are based on the latest product information available at the time of publication. Mercedes-Benz reserves the right to make changes at any time, without notice, to colors, materials, equipment, specifications and models. Any variations in colors shown are due to reproduction variations of the printing process. Illustrations may include test situations. Some vehicles may be shown with non-U.S. equipment. Some vehicles are shown with optional equipment. iPhone and iPod are registered trademarks of Apple Inc. Bluetooth is a registered trademark of Bluetooth SIG, Inc. Google Maps is a registered trademark of Google Inc. harman/kardon and LOGIC7 are registered trademarks of Harman International Industries, Inc. HD Radio is a proprietary trademark of iBiquity Digital Corporation. BlackBerry is a registered trademark of Research In Motion Limited. SIRIUS, XM and all related marks and logos are trademarks of SIRIUS XM Radio Inc. and its subsidiaries. All rights reserved.