



امداد خودرو فارما

تلفن شبانه روزی: ۰۸۵-۱۱۱۶۲۰۸۱-۲۱

FarmaSOS.com

2009 SL-Class

Mercedes-Benz



ایراد خودرو فارس

تلفن: ۰۲۱-۸۸۸۶۲۰۰

FarmaSOS.com

SL 550 shown in Steel Grey metallic paint with optional Premium 1 Package.

The legend.
Retold.

It is a tale that improves with each telling. Namely, the Mercedes-Benz SL-Class. Fifty years in the making, these iconic and now redesigned roadsters flaunt more intensely sculpted exteriors and new 18" wheels.¹ A new hard-drive-based COMAND system makes navigation and calling as simple as speaking. Classic side gills evoke the SL's Gullwing heritage and all that hasn't changed. For instance, engines that unleash awesome power. And, of course, there's the rush of lowering the retractable hardtop roof. An experience well worth repeating. Legends are like that.



SL 550 shown in Palladium Silver metallic paint with optional Premium 1 Package.
Please see page 49 for Endnotes.

امداد خودرو فارما

تلفن شبانه روزی: ۰۲۱-۸۸۶۲۰۸۵

FarmaSOS.com



Mercedes-Benz Firsts

- 1886 The first car
- 1911 The multivalve engine
- 1921 The supercharged engine
- 1931 Independent suspension
- 1936 The first diesel passenger car
- 1951 The crumple zone
- 1954 Fuel injection
- 1971 A patent for the air bag
- 1982 Multilink rear suspension
- 1983 Seat-belt Emergency Tensioning Device
- 1989 The pop-up roll bar
- 1990 4-wheel Electronic Traction System
- 1995 Electronic Stability Program (ESP®)
- 1996 Panorama Sunroof
- 1997 Low-emission SUV
- 1997 Brake Assist
- 1997 BabySmart™ system
- 1997 SmartKey
- 1997 Touch Shift
- 1998 Window Curtain Air Bags
- 1998 10-way air-bag protection
- 1999 Active Body Control
- 1999 AIRMATIC Semi-Active Suspension
- 2000 DISTRONIC Adaptive Cruise Control
- 2001 KEYLESS-GO
- 2002 Drive-Dynamic multicontour front seats
- 2002 PRE-SAFE®
- 2002 Bi-turbo 5.5-liter V-12 engine
- 2002 Automatic brake drying
- 2002 Predictive Brake Priming
- 2003 7-speed automatic transmission
- 2004 High-output, high-efficiency V-6 engine
- 2006 BlueTEC
- 2006 Night View Assist
- 2007 AGILITY CONTROL suspension

Car companies
make cars.
We make history.

The world's first automobile. The supercharged engine, diesel passenger car and fuel injection. The crumple zone, multilink rear suspension and pop-up roll bar – all were created by Mercedes-Benz. Yet while these and other Mercedes-Benz firsts read like a history of the automobile, just as important are recent innovations – advances like PRE-SAFE and BlueTEC, the world's cleanest diesel engine – that point to its future.

SL 550 shown at right in Palladium Silver metallic paint with optional Premium 1 Package.

امداد خودرو فارما

تلفن شعبانه روی: ۰۲۱-۸۸۸۶۲۰۸۵

PharmaSOS.com



Reflections on
timeless style.

One look at the SL Roadster's past and you'll see what we've been driving at all along – timeless style. Now look at the front air dam: it's bigger and more chiseled than ever. The side gills, more pronounced. And the exhaust pipes, shaped to Euro-Racing perfection. Ridges in the hood suggest more power; the low-slung stance, more attitude. Flashing new side mirrors, the SL rolls along on imposing new 18" alloy wheels¹ whose width has been staggered for greater control during cornering. Silently, the hardtop disappears in 16 seconds. Far longer than it takes to succumb to this redesigned roadster's powerful beauty.



اندلس خود و فارما

تلفن شبانه روزی: ۰۲۱-۸۸۸۶۲۰۸۵

farmaSOS.com

SL 600 shown in Black paint.
Please see page 49 for Endnotes.



Its toughest
competition?
Its past.

The handling technology of the SL Roadster is so advanced, we may finally have surpassed ourselves. A firm suspension plus Active Body Control minimizes sway and roll. Massive front brakes, both perforated and ventilated, have a stopping power equal to the car's incredible force.² Available shift paddles put even more control at your fingertips. Taken together, these features invite you to ease into sudden bends and conquer turns. In short, get ready for driving satisfaction that's unsurpassed.

امداد خودرو فارس

تلفن شبانه روزی: ۰۸۵-۶۲۰۸۵۰۸۵

maSOS.com

SL 600 shown in Black paint.
Please page 49 for Endnotes.

A formidable display of power.

Presenting three engines as enthralling as the SL exterior: a 5.5-liter V-8 in the SL 550, a bi-turbo V-12 in the SL 600 and a hand-built, 518-horsepower V-8 in the SL 63 AMG. Torque ratings are just as impressive: up to 612 lb-ft in the SL 600. More than enough to surge from any green light. Each engine block is also cast from lightweight/high-strength aluminum alloy and joined to a 5- or 7-speed automatic transmission that adapts to your driving style. Or is it your lust for power?



SL 550

ENGINE SIZE AND TYPE
5,461-cc DOHC 32-valve V-8

NET POWER
382 hp @ 6,000 rpm

NET TORQUE
391 lb-ft @ 2,800-4,800 rpm

ACCELERATION
0-60 mph in 5.3 seconds³

SL 600

ENGINE SIZE AND TYPE
5,513-cc bi-turbo SOHC 36-valve V-12

NET POWER
510 hp @ 5,000 rpm

NET TORQUE
612 lb-ft @ 1,800-3,500 rpm

ACCELERATION
0-60 mph in 4.4 seconds³

SL 63 AMG

ENGINE SIZE AND TYPE
6,208-cc AMG-built DOHC 32-valve V-8

NET POWER
518 hp @ 6,800 rpm

NET TORQUE
465 lb-ft @ 5,200 rpm

ACCELERATION
0-60 mph in 4.5 seconds³

SL 600 shown in Mars Red paint with optional SL Wheel Package.

Please page 49 for Endnotes.



Entertain the idea of a sanctuary.

Is there anything as pleasurable as driving the SL Roadster? Surely, just sitting in it comes close. Ten meticulously placed speakers, 510 watts and a harman/kardon LOGIC7® surround-sound system with Dolby® Digital 5.1 amount to the best in broadcast, SIRIUS® Satellite Radio and CDs. In addition to the new COMAND system, the iPod®/MP3 Media Interface allows you to access your playlist. There's even an in-dash SD memory card reader and the Gracenote® database for artist and song-title information. Driving an SL with a soundtrack as customized as it is clear – sounds perfect.

Allows you to connect and control various audio devices through the COMAND system.⁴

iPod/MP3 Media Interface

A 6.5" color-LCD display with 40-gigabyte hard-drive-based navigation.

New COMAND system

With this feature, you can download four gigabytes of music – 1,000 songs – right to the vehicle's hard drive.

Music Register

Allows for convenient and safe operation of navigation, radio, telephone and the 6-disc CD/DVD changer by simply speaking.

Enhanced Voice Control

This available feature is adjustable for body-hugging support and engineered to soothe your back the whole way.

Multicontour seats with massage feature

FarmaSOS.com

That rare moment
where we let
ourselves get
comfortable.

Much like the exterior, the SL interior seduces. The seats not only adjust 12 ways at the touch of a button, they're heated. Relax in available multicontour seats with adjustable lumbar support and side bolsters. A massage feature is also available, as are Active Ventilated Seats that warm or cool. The serene atmosphere is furthered by dual-zone climate control and a selection of wood trims that includes Burl Walnut and available Black Ash. And the new AIRSCARF system—standard on the SL 600, optional on the SL 550 and SL 63 AMG—warms your neck and shoulders for open-aired driving on chilly days. Seduced yet?

SL 550 shown with Stone leather interior and optional Premium 1 Package.

ایراد خودرو فارس

تلفن: ۰۲۱-۸۸۸۶۲۰۸۵

FarmaSOS.com



Bluetooth. Voice Control. After all, you're used to calling the shots.

The SL-Class comes equipped with both Bluetooth® connectivity and Enhanced Voice Control. Combined, these technologies enable you to merely speak a name and then have that person called by phone. You can also access the 40-gigabyte hard-drive-based Navigation System, including Zagat® Restaurant Survey listings, with nothing more than your verbal commands.⁴ The 3-spoke sport steering wheel boasts controls for the audio system, hands-free calling and more. At the rear, the Easy-Pack System does just that for optimum organization. There's also an optional Electronic Trunk Closer. Like we said, in the SL, you really do call the shots.

Please see page 49 for Endnotes.

AIRSCARF

This available innovation makes convertible driving comfortable even on chilly days.

SmartKey

Unlock doors, open the trunk, windows and roof, and even turn on the Active Ventilated Seats. All remotely.

KEYLESS-GO

With your SmartKey in your pocket, press the brake and the engine's On button—and you're off. Available on all models.

DISTRONIC Adaptive Cruise Control

Using radar, this option monitors the vehicle ahead and adjusts your speed to help maintain your chosen following distance.⁵

REST mode

Heats or ventilates the cabin for up to 30 minutes after the engine has been turned off.



امداد خودرو فارما

تلفن شبانه روزی: ۰۲۱-۸۸۶۲۰۸۵

FarmaSOS.com



سازاد خودرو فارس

تلفن شبانه روزی: ۸۵-۸۸۸۶۲۰۱۱

FarmaSOS.com

Among the big advances, brakes that sense danger.

Uncertain driving situations—they're why the SL Roadster has so many innovative safety systems. For instance, in addition to features like high-strength steel and five air bags including side-impact protection, Predictive Brake Priming automatically sets the brake pads closer to the rotors for more immediate braking when the system detects that the accelerator has been released quickly. Should sensors detect a potential rollover, a pop-up roll bar—technology pioneered by Mercedes-Benz—rises in just 0.3 seconds to help protect occupant space.⁸ New wraparound Bi-Xenon headlamps turn heads—and turn with the steering wheel to light hidden corners via Active Curve Illumination. These are just a few examples of a commitment to safety that is anything but uncertain.

Head/thorax air bags that deploy with the top up or down

Provides protection in side-impact collisions and helps keep objects from entering the vehicle.⁷

Automatic brake drying

When the wipers are on, the brake pads are periodically pressed against the discs to keep them dry. And more effective.²

Tire Pressure Monitoring System

Should your tire pressure fall below preset levels, you'll get both an audio and a visual warning.

SL 550 shown in Iridium Silver metallic paint. Please see page 49 for Endnotes.

The roadster at its most refined.



اراد خودرو فارس

تلفن شبانه روزی: ۰۲۱-۸۸۸۶۲۰۸۵

FarmaSOS.com

SL 600 shown above left in Palladium Silver metallic paint. SL 550 shown at right in Iridium Silver metallic paint with optional Premium 1 Package.

| SL 550

Feel the expansive power with just one tap of the accelerator. Under the aggressively redesigned hood grows a 382-horsepower V-8 engine that moves from 0 to 60 mph in just 5.3 seconds.³ Such vigor finds its counterpart in the taut handling of a multilink suspension. Just as fierce is our commitment to innovation. For example, the 7-speed automatic transmission actually adapts to your driving style. The new COMAND system provides hard-drive-based navigation, Bluetooth® capability for hands-free calling⁹ and SIRIUS Satellite Radio featuring over 130 channels.¹⁰ Outside, Bi-Xenon headlamps with Active Curve Illumination light darkened corners, as well as the road ahead. And all of this rolls on new 18" 5-spoke wheels.¹ One tap of the accelerator is all it takes.

5.5-liter V-8 engine
Retractable hardtop
Bi-Xenon curve-illuminating headlamps
Easy-Pack System
Heated 12-way power seats
New COMAND system with Bluetooth
connectivity, 40-gigabyte navigation and more



تلفن شبانه روزی: ۰۲۱-۸۸۸۶۲۰۸۵
FarmaSO3.com

SL 550 shown in Iridium Silver metallic paint with optional Premium 1 Package.
Please see page 49 for Endnotes.

| SL 600

Turbopowered—times two. The engine in the SL 600 is a bi-turbo V-12, wielding a staggering 510 horsepower and 612 lb-ft of torque. This results in a roadster that bolts to 60 mph in just 4.4 seconds.³ Assert this authority with a driver-adaptive 5-speed automatic transmission controlled by a wood/leather shift knob or racing-inspired shift paddles. Massive new 18" twin 10-spoke wheels¹ and a split dual chrome exhaust declare this vehicle's bold intentions. Inside, experience the pleasures of heated 12-way multicontour power seats equipped with Active Ventilation. Likewise, AIRSCARF ensures enough warmth on your neck and shoulders for convertible driving—even on cool days. Exclusive Leather furnishes the cabin. Exclusivity being the idea behind every inch of this remarkable roadster.

SL 600 shown at right in Palladium Silver metallic paint.
Please see page 49 for Endnotes.



5.5-liter bi-turbo V-12 engine
14.2" front disc brakes
Multicontour Active Ventilated Seats
Wood/leather steering wheel and shift knob
Exclusive Leather upholstery and Alcantara-covered ceiling
New COMAND system with Bluetooth® connectivity,
40-gigabyte navigation and more
AIRSCARF for warmth on your neck and shoulders



امداد خودرو فاربا

تلفن شماره روزانه ۰۲۰-۸۸۱۱۲۱۱

FarmaSOS.com

An aggressive new front air dam and rear bumper, with dual twin chrome tailpipes and a diffuser look, are just the first of many additions to this iconic roadster. Fresh 19" triple 5-spoke light-alloy wheels¹ feature 14.2" perforated front brake rotors. New for the 2009 SL 63 AMG is a 6.3-liter V-8, our most powerful naturally aspirated engine ever. And advances like AMG-adjusted Active Body Control harness this ferocity with finesse. The new 3-spoke sport steering wheel boasts aluminum shift paddles to capitalize on the new AMG SPEEDSHIFT™ MCT (Multi-Clutch Technology) 7-speed sport transmission. This breakthrough delivers uninterrupted power for hair-trigger response. With a cockpit trimmed in Carbon Fiber, the 2009 SL 63 AMG Roadster is indeed new. And every bit as legendary.

Fun gets the epic treatment. **SL 63 AMG**

Drivetrain

Engine AMG-built DOHC 32-valve V-8
Power 518 hp @ 6,800 rpm
Torque 465 lb-ft @ 5,200 rpm
Displacement 6,208-cc
Compression 11.3:1
Transmission 7-speed automatic with
AMG SPEEDSHIFT MCT.
Acceleration 0-60 mph in 4.5 seconds³

Chassis

Suspension Front: Independent 4-link,
Stabilizer bar.
Rear: Independent 5-arm multilink,
Stabilizer bar.
AMG-enhanced Active Body Control.
Wheels 19" AMG triple 5-spoke, 8.5x19 /
9.5x19 staggered.
Brakes AMG-enhanced 4-circuit
electrohydraulic.
14.2" front – 13.0" rear, compound
perforated/ventilated discs.

SL 63 AMG shown in Iridium Silver metallic paint.
Please see page 49 for Endnotes.



5.5-liter V-8 engine

One of our most advanced engines generates 382 horsepower and 391 lb-ft of torque, with an amazing 75% of peak torque available at just 1,000 rpm. To help reduce engine weight and increase durability, the engine block is made of cast aluminum with a solid bedplate, an ideal construction for performance. Indeed, the engine's smooth, immediate power delivery whisks the SL 550 from 0 to 60 mph in 5.3 seconds³

Please see page 49 for Endnotes.

Bi-turbo V-12 engine

The SL 600 racks up high numbers—510 horsepower and an astonishing 612 lb-ft of peak torque between 1,800–3,500 rpm—because its powerplant endows brawn with brilliance. The staggering low-end torque stems from two compact turbochargers which, with an optimized turbine, nearly eliminate “turbo lag.” And two liquid-to-air intercoolers yield a charge for more powerful combustion—and more powerful performance.

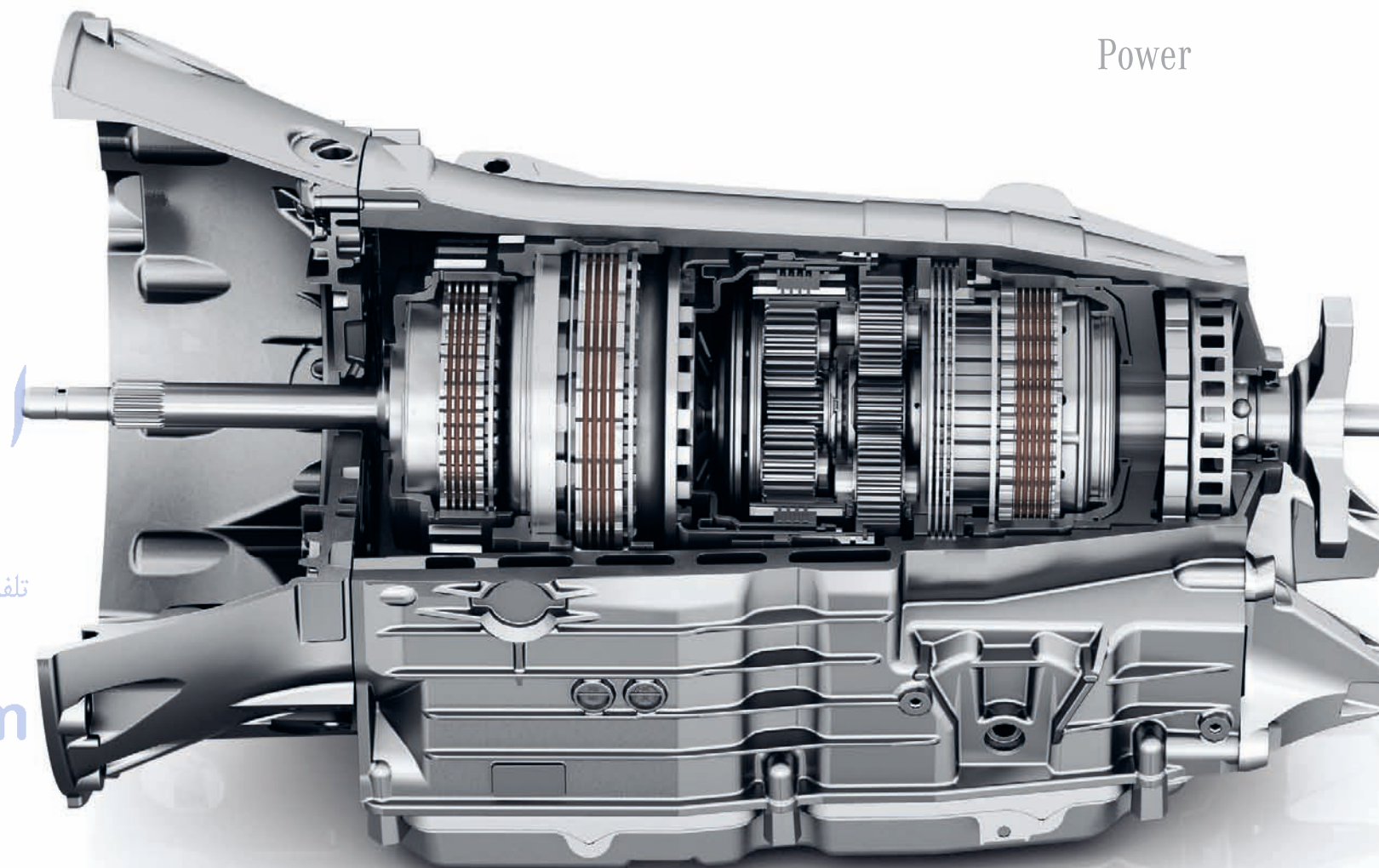


5-speed automatic transmission

The SL 600's 5-speed automatic is designed to handle the massive torque of its bi-turbo V-12. This gearbox is also driver-adaptive: it learns how you like to drive and adjusts its shift points accordingly. The Touch Shift feature allows the driver to select gears by using the shift paddles on the rear of the steering wheel.

AMG 6.3-liter V-8 engine

The most powerful naturally aspirated V-8 in our lineup has been mated to our all-new AMG SPEEDSHIFT™ MCT (Multi-Clutch Technology) 7-speed sport transmission for ready – and uninterrupted – access to that enormous strength. Feel a rush of euphoria as the engine develops a massive 518 horsepower and 465 lb-ft of torque to propel the SL 63 AMG from 0 to 60 in just 4.5 seconds.³ And like all AMG engines, each is hand-built and signed by a single master technician.



7-speed automatic transmission

The Mercedes-Benz SL 550 is the only car in its class to have a driver-adaptive 7-speed automatic transmission as standard equipment. A wide range of closely spaced gears delivers the ideal gear ratio for virtually every driving condition, which means smoother cruising and immediate response for acceleration and passing, and even improved fuel efficiency on the highway. In the SL 63 AMG, the innovative new AMG SPEEDSHIFT MCT 7-speed sport transmission comes equipped with aluminum shift paddles borne of the racing circuit.

Power

امداد خودرو فارما

تلفن شبانه روزی: ۰۸۵-۸۸۶۲۰۸۵

FarmaSOS.com



Agility

امداد خودرو فارما

تلفن شبانه روزی: ۰۲۱ ۸۸۶۲۰۱۵

SL 550

18" 5-spoke light-alloy wheels¹

These staggered-width wheels come equipped with 255/40 R18 high-performance tires¹ in front and 285/35 R18s¹ in back, which accentuate the breathtaking lines of the SL 550.

Our SL Wheel Package offers an AMG 5-spoke treatment for an added dash of attitude.

SL 600

18" twin 10-spoke light-alloy wheels¹

These wheels come equipped with 255/40 R18 high-performance tires¹ in front and 285/35 R18s¹ in back, which are the perfect complement to the SL 600. Or embolden the roadster with the aggressive AMG 5-spoke design of the SL Wheel Package.

SL 63 AMG

19" AMG triple 5-spoke light-alloy wheels¹

A fearsome roadster demands wheels to match. That's why the SL 63 AMG rides on imposing 19" AMG light-alloy wheels¹ designed in high-sheen, triple-spoke style.



Vehicle-speed-sensitive steering

At lower speeds, the vehicle-speed-sensitive power rack-and-pinion steering delivers more power assist for easy handling. At higher speeds, the amount of power is reduced for improved road feel and control.

Multilink sport suspension

The 4-wheel multilink suspension is key to the exceptional poise and control of the SL-Class. The 5-arm rear multilink design—a Mercedes-Benz innovation—controls rear-wheel movement with outstanding precision. For more dynamic handling, the front axle assembly, front suspension and steering gear are all preassembled along with the engine and transmission on an extraordinarily rigid steel subframe.

Active Body Control (ABC)

Arguably the most advanced suspension system in production, ABC provides an excellent balance of ride comfort and handling while virtually eliminating bodyroll during cornering. A series of sensors and electronically controlled high-pressure hydraulics counteracts the effects of roll, vibration, pitch, dive and squat. And to enjoy more performance maneuvers, the driver can select Sport mode via a button next to the shift knob.

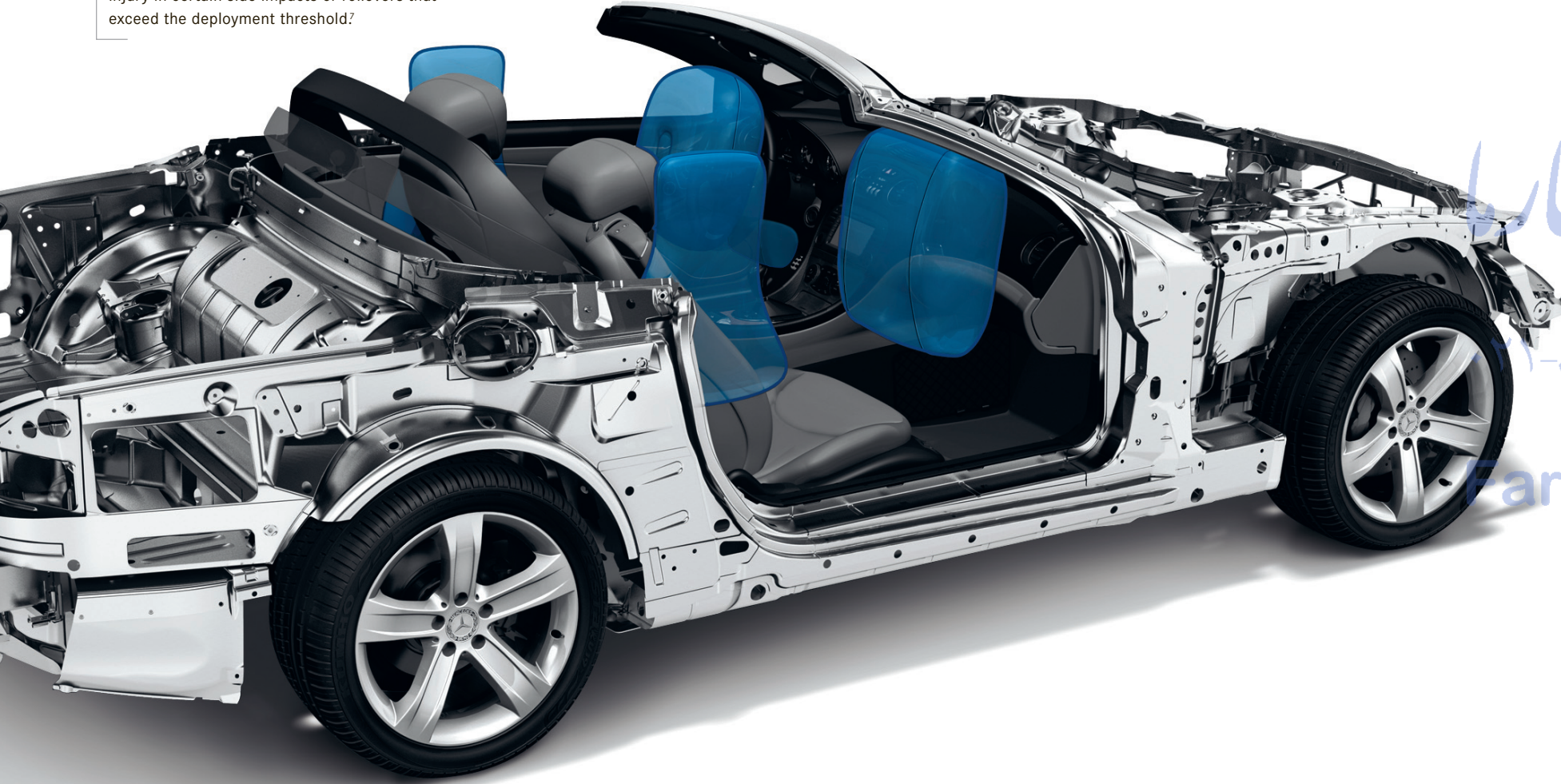
Brakes

All SL-Class models offer perforated and ventilated front disc brakes that provide powerful stopping control. The automatic Brake Drying feature is designed to improve stopping performance in wet conditions by intermittently (and imperceptibly) pressing the brake pads against the rotors when the windshield wipers are in use to remove excess water on the rotors. The Predictive Brake Priming feature helps reduce stopping time in emergencies. If you quickly remove your foot from the accelerator, the system moves the brake pads closer to the rotors to prepare for rapid braking.²

Protection

7-way air-bag protection

The SL-Class features the 7-way protection of a 5-air-bag system. It includes dual-stage front air bags, side-impact head/thorax air bags and a driver-side knee bag. The head/thorax air bags help protect occupants from upper body and head injury in certain side impacts or rollovers that exceed the deployment threshold^a.



Pictured air bag differs slightly in appearance from an inflated air bag in SL-Class vehicles.

Electronic Stability Program (ESP®)

This advance continually monitors your vehicle's motion to help keep you going in your intended direction. If it detects wheelspin, severe understeer (plowing) or oversteer (fishtailing), ESP can brake individual wheels and reduce engine power to help bring the vehicle under control. It significantly helps you maintain control during accident-avoidance maneuvers.^a

Brake Assist (BAS)

Research shows that drivers seldom apply the brakes hard enough, soon enough in emergency situations. BAS monitors pedal application speed to sense emergency braking and deliver maximum stopping power.^b

Side-impact protection

Reinforced doors, side sills and floorpan are part of an integrated safety design that also includes high-strength seat structures and head/thorax air bags. All of these systems work together to help protect occupants during side impacts.

Seat belts

Equipped with Emergency Tensioning Devices (ETDs) and adaptive belt force limiters, seat belts are arguably our most important passive safety feature. If a collision exceeds a preset threshold, the ETDs instantly remove slack from the seat belts. Belt force limiters allow a slight amount of give in the seat belts and reduce the peak seat-belt forces on the occupant.



Body structure

A range of precision safety elements work together to protect you and your passenger in the event of a collision. While High-Strength/Low-Alloy steel in important areas of the vehicle helps to form an exceptionally rigid structure, advanced front and rear crumple zones deform progressively to help absorb the energy of an impact. A front bulkhead also helps channel some of the forces of a frontal impact under, over and around the cabin.

Pop-up roll bar

In 1989, Mercedes-Benz pioneered the pop-up roll bar, a significant advancement in convertible safety. When sensors detect an impending rollover, a roll bar pops up in just 0.3 seconds to help preserve and protect occupant space.^c

Rollover sensor

If the SL senses certain rollovers, it will automatically deploy the seat-belt ETDs to help reduce occupant movement and, if deemed necessary, can release the appropriate head/thorax air bag.

Bi-Xenon headlamps with Active Curve Illumination

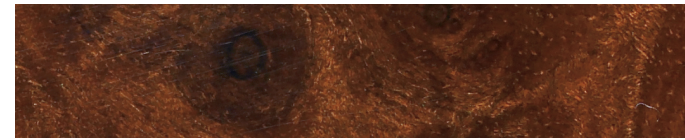
This standard feature helps you see better around corners at night via Bi-Xenon headlamps that turn along with your steering wheel. They provide a clearer view into corners by increasing usable illumination by up to 90% over conventional fixed headlamps. Bi-Xenon headlamps also deliver superior visibility over halogen headlamps because their brighter, whiter light is much closer to natural sunlight.



^a No system, regardless of how advanced, can overcome the laws of physics or correct careless driving. Please always wear your seat belt. Performance is limited by available traction, which snow, ice and other conditions can affect. Always drive carefully, consistent with conditions. Best performance in snow is obtained with winter tires. ^b Braking effectiveness also depends on proper brake system maintenance, and tire and road conditions. ^c The roll bar system is designed to enhance the level of rollover protection compared to a vehicle without one. No system, regardless of how advanced, can eliminate the chance of injury in an accident. Please always wear your seat belt.

Color and Trim

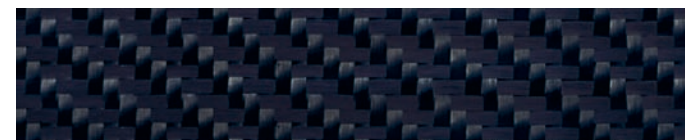
Interior upholstery and trim



Burl Walnut wood



Black Ash wood



Carbon Fiber (SL 63 AMG only)

Interior upholstery and trim, leather^a



Black



Stone



Red



Ash

Exterior paintwork, non-metallic



Black



Mars Red

Exterior paintwork, metallic



Majestic Black



Capri Blue



Storm Red



Pewter



Palladium Silver



Iridium Silver

Exterior paintwork, metallic (continued)



Diamond White



Steel Grey



Take high style to new heights with our exclusive *designo* appointments.

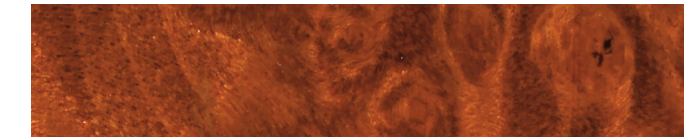
designo Espresso Edition^b



Mocha Black



Sand Nappa leather

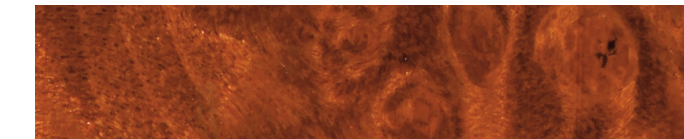


Natural Maple wood

designo Porcelain White Edition (Interior Package)^b



Porcelain Nappa leather



Natural Maple wood

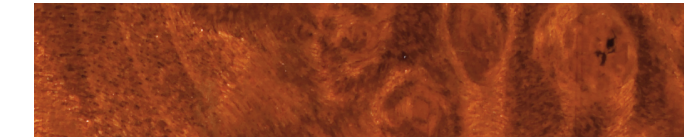
designo Graphite Edition^b



Graphite



Corteccia Nappa leather



Natural Maple wood

اد خودرو فارما
تلفن شبانه روزی: ۰۲۱-۸۸۸۶۲۰۸۵
FarmaSOS.com

^a Exclusive Leather standard SL 600. ^b Optional at extra cost.

Amenities



Power-retractable hardtop ●

When it comes to putting the top down, the SL-Class is the fastest hardtop convertible around. Simply use the control switch on the center console or SmartKey remote, and the SL-Class goes from coupe to roadster in just 16 seconds—faster than any other retractable hardtop in production. When raised, this innovative top makes the SL-Class as beautiful a coupe as it is a roadster. In other words, a joy to drive all year round.

Standard all models.

Electronic Trunk Closer ● ○

This feature allows the driver to fully open and close the trunk via a switch on the driver's interior door panel. You can also close the trunk lid by pressing a button on its underside or open it with the SmartKey remote.

Standard SL 600. Optional SL 550 and SL 63 AMG.

Dual-zone climate control ●

The driver and passenger can select their own level of heating or cooling thanks to newly designed individual controls for each on the dashboard. When set to the Auto position, this system can monitor sunlight intensity and seat occupancy, determining which side of the car requires greater cooling and adjusting the temperature and airflow accordingly.

An electrostatic dust and pollen filter helps remove certain pollutants from the air, while the smog-sensing recirculation function can automatically sense smog or exhaust and switch the climate control to recirculation.

Standard all models.

Panorama Sunroof ● ○

The Panorama Sunroof extends from the windshield to the rear window to give you a view of the sky without putting the top down. The roof comes with a retractable mesh sunshade, which helps eliminate glare and keep the cabin cooler on sunny days.

Standard SL 600. Optional SL 550 and SL 63 AMG.



Heated 12-way power seats ●

Both of the SL's deeply contoured seats offer 12-way power adjustment plus pneumatically adjustable lumbar support, 3-position memory and two levels of soothing heat. The driver's seat memory also stores settings for the power tilt/telescoping steering column and outside mirror positions.

Standard all models.

Active Ventilated Seats ● ○

Three levels of ventilation are available for the SL's seats. Active Ventilated Seats are designed to keep you cool during warmer months by gently circulating air through perforations in the seat and backrest, which also helps eliminate perspiration buildup. Using both the ventilation and heating features simultaneously can help keep you warm and dry on cold and rainy days.

Standard SL 600. Optional SL 550 and SL 63 AMG.



AIRSCARF ● ○

While the roof of the SL-Class may drop in 16 seconds, this dynamic roadster offers more hours of top-down enjoyment than you might expect. Picture a sunny day. Now imagine an unseasonable chill. Well, lower the top regardless. Included in the optional Premium 1 Package, AIRSCARF blasts three levels of warm air onto the back of your neck. Coupled with heated seats, you'll savor the pleasures of owning a convertible on numerous days and nights. Ah, the delights of innovative technology.

Standard SL 600. Optional SL 550 and SL 63 AMG.

Multicontour seats with massage function ● ○

The multicontour seats provide the ultimate in seating ergonomics and comfort. Triple lumbar supports as well as pneumatically adjustable side bolsters and shoulder supports allow you to custom-tailor the fit of your seat and offer body-hugging support. The massage function helps fight fatigue by stimulating muscles throughout the back.

Standard SL 600 and SL 63 AMG. Optional SL 550.

All-new COMAND system ●

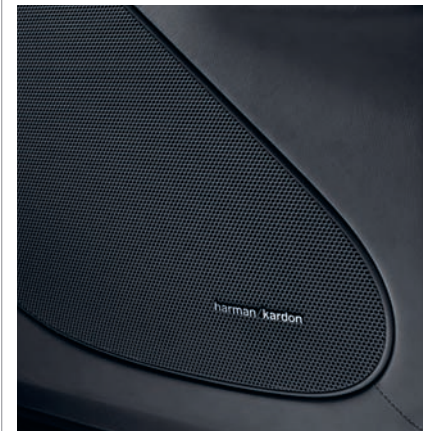
Your center for easy mastery over audio, video, hands-free calling and navigation functions. Our upgraded Cockpit Management and Data (COMAND) system lets you not only change stations, choose tracks and adjust the volume, but also make calls, because now it comes equipped with Bluetooth® connectivity.⁷ Beyond traditional music sources, there's also SIRIUS Satellite Radio and an SD memory card slot. For compressed audio files, the Music Register offers four gigabytes of music (MP3/WMA files) downloading capability. Further customize your music with the standard iPod/Media Interface to explore the contents of compatible electronic devices. All on a 6.5" color-LCD screen and easily accessed via steering-wheel or dashboard controls.

Standard all models.

Hard-drive-based Navigation System ●

Using a hard drive built into the new COMAND system and GPS satellites to locate your position, this feature displays the route to your destination and suggests Points Of Interest along the way—hotels, ATMs, Mercedes-Benz dealerships and more—in more vivid detail than ever before. The system is also equipped with Zagat Survey® for finding restaurants. Maps and other visual aids appear on-screen; voice instructions play through the audio system.⁶ And you? You simply enjoy the journey.

Standard all models.



harman/kardon LOGIC7® surround-sound system with Dolby Digital 5.1" ●



This surround-sound system fills the cabin with 510 watts of beautifully balanced sound. Ten optimally placed speakers deliver an enthralling surround-sound experience from MP3s, SIRIUS Satellite Radio, the 6-disc CD/DVD changer and even discs in DVD-Audio and DTS formats. An integrated microphone monitors vehicle acoustics and adjusts frequency response to deliver the optimum sound experience. There's also a wealth of information as song-title and artist names pop up right on the COMAND screen, courtesy of Gracenote.®

Standard all models.

iPod®/MP3 Media Interface ●

Mercedes-Benz has a long history of incorporating the latest consumer electronics into our automobiles. That tradition continues with the available iPod/MP3 Media Interface, a series of outlets that connect to the new COMAND system. This feature unlocks the key to enjoying a host of devices and functionality, from iPods to MP3 players.⁴

Standard all models.



SIRIUS Satellite Radio ●

Enjoy a 6-month subscription to SIRIUS with over 130 channels including 69 channels of 100% commercial-free music, plus news, talk, entertainment, traffic, weather and data. SIRIUS is also home to live play-by-play broadcasts of the biggest sports—NFL, NASCAR,® NBA and games from over 150 college sports teams. SIRIUS is sure to be one of your favorite cabin appointments.¹²

Standard all models.

Enhanced Voice Control ● Bluetooth™

While this helpful feature makes hands-free calls a cinch, it also aids other functions. Like navigation. You no longer need to spell out a destination when using the Navigation System—just saying “Toledo” or “Tallahassee” is sufficient. This voice control is so sophisticated, it can even screen out “ums” and “ahs” and understand “yeah” for “yes.” Yes, indeed.

Standard all models.

PARKTRONIC system ● ○

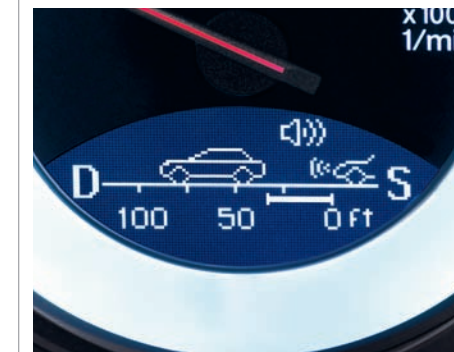
When parking, ultrasonic sensors in the front and rear bumpers detect nearby objects within the system's field of view. Audible signals and illuminated displays, visible in both the instrument cluster and rearview mirror, help you maneuver with confidence. This system helps you avoid obstacles that might be outside your field of vision when parking in tight spaces.

Standard SL 600. Optional SL 550 and SL 63 AMG.

KEYLESS-GO ● ○

A leap in ease and efficiency, this option lets you open or lock any door or the trunk while leaving your vehicle's SmartKey in your pocket. To start the vehicle, simply step on the brake pedal and push the Start button, located on the gearshift lever. You can also start the vehicle by inserting the SmartKey in the ignition.

Standard SL 600. Optional SL 550 and SL 63 AMG.



DISTRONIC Adaptive Cruise Control ○

This radar-based system monitors the vehicle ahead and adjusts your speed to help maintain your chosen following distance.⁵ If the vehicle ahead suddenly slows or abruptly stops and calculated closing speed indicates that you haven't applied sufficient braking power, the DISTRONIC Proximity Warning System issues an audiovisual warning.¹³

Optional all models.

Accessories

A Mercedes-Benz is the definition of luxury and performance. It can also be a statement of personal style. Our array of genuine accessories are each designed, engineered and tested to the same exacting standards as your vehicle. Which is to say, to your own high standards.



Illuminated door sills

Light up your SL-Class in eye-catching style each time you open the door with these luminous white "Mercedes-Benz" stainless-steel door sills. Available in sets of two, they say "Mercedes-Benz" in more ways than one. Thrillingly.



Chrome accents

Help protect your finish from scratches and add yet another touch of style with our set of two chrome door-handle inserts. Ideal for complementing the glittering exterior, too.



Light-alloy wheels

Whether it's the elegant 18" 9-spoke wheel or the bold 19" 5-spoke wheel, both reveal a sterling-silver finish – and come equipped with high-performance tires.

Exterior car care kit

The best way to clean and protect the outside of your vehicle. This dedicated kit of car-specific materials includes car shampoo, a sponge and a cloth, as well as a light-alloy wheel cleaner with an accompanying brush. And it all comes in one convenient Mercedes-Benz leisure bag.

Interior car care kit

Why shouldn't your cabin also look its best? Make it so with these specially formulated car care products—from glass cleaner to an auto glass sponge, from cloth to cabin care spray. These, too, come neatly packed in a Mercedes-Benz leisure bag.

امداد خودرو فارما

تلفن شنبه روزی: ۰۸۵-۸۸۶۲۰۸۵

FarmaSOS.com



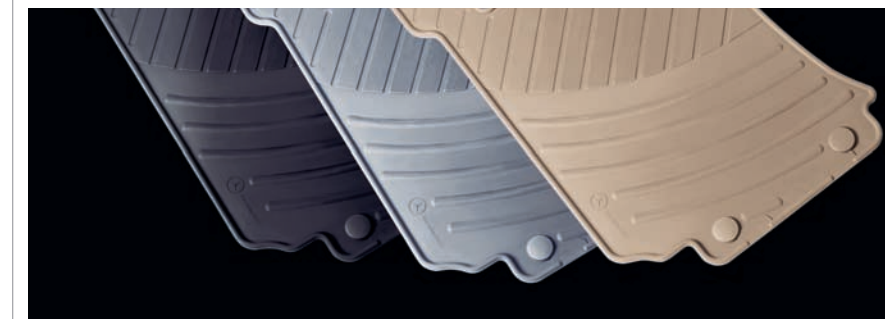
Dust cover

Protect your vehicle from dust, dirt and scratches in enclosed spaces like garages. The outside of the cover consists of a synthetic material both breathable and durable, while the inside is a soft, flannel-style fabric. The Mercedes-Benz star on the hood and the pale silver color ensure that your vehicle has a refined look, even when covered.



Rear-shelf bag

This large-capacity bag with luggage straps is custom-designed to fit perfectly on the rear shelf of your vehicle. Made of leather and nylon, this 32" x 13" x 12" item features a roomy main compartment, dual zippers for easy access and two interior zip pockets. For a sleeker line, the zip collar extends beyond the end of the bag and fastens magnetically to the sides.



All-season floor mats

Keep the carpet of your roadster in top condition, in virtually any weather. Deep channels in the floor mats trap large amounts of water, mud and melting snow. Easy to clean, they come four mats to a set and are available in Black, Grey or Beige.

SL 550 Coupe/Roadster

SL 600 Coupe/Roadster

SL 63 AMG Coupe/Roadster

ENGINE

Engine size and type	5,461-cc DOHC 32-valve V-8	5,513-cc bi-turbo SOHC 36-valve V-12	6,208-cc AMG-built DOHC 32-valve V-8
Construction	Aluminum-alloy cylinder block.	Aluminum-alloy cylinder block.	Aluminum-alloy cylinder block.
Net power	382 hp @ 6,000 rpm	510 hp @ 5,000 rpm	518 hp @ 6,800 rpm
Net torque	391 lb-ft @ 2,800-4,800 rpm	612 lb-ft @ 1,800-3,500 rpm	465 lb-ft @ 5,200 rpm
Compression ratio	10.7:1	9.0:1	11.3:1
Fuel tank (capacity—reserve)	21.1 gal—2.6 gal	21.1 gal—2.6 gal	21.1 gal—2.6 gal

DRIVETRAIN

Transmission	7-speed automatic. Electronically controlled driver-adaptive shifting.	5-speed automatic. Electronically controlled driver-adaptive shifting.	7-speed automatic with AMG SPEEDSHIFT™ MCT. Electronically controlled driver-adaptive shifting.
Drive configuration	Rear-wheel drive.	Rear-wheel drive.	Rear-wheel drive.
Rear axle ratio	2.65:1	2.65:1	3.06:1

TRACTION/STABILITY

Electronic Stability Program (ESP®)	Standard.	Standard.	Standard AMG 3-stage.
-------------------------------------	-----------	-----------	-----------------------

PERFORMANCE

Acceleration, 0-60 mph³	5.3 seconds.	4.4 seconds.	4.5 seconds.
Fuel economy, EPA estimate highway estimate	Information not available at time of printing. See your dealer for details.	Information not available at time of printing. See your dealer for details.	Information not available at time of printing. See your dealer for details.

Please see page 49 for Endnotes.

SPECIFICATIONS AND EQUIPMENT

SL 550 Coupe/Roadster

SL 600 Coupe/Roadster

SL 63 AMG Coupe/Roadster

CHASSIS

Suspension configuration	Front: Independent 4-link. Rear: Independent 5-arm multilink.	Front: Independent 4-link. Rear: Independent 5-arm multilink.	Front: Independent 4-link. Rear: Independent 5-arm multilink.
Active Body Control (ABC)	Standard.	Standard.	Standard, AMG-modified.
Steering	Rack-and-pinion with vehicle-speed-sensitive power assist. Turning circle: 36.2 ft curb-to-curb.		

WHEELS/TIRES

Wheels	18" 5-spoke, 8.5x18 front—9.5x18 rear.¹	18" twin 10-spoke, 8.5x18 front—9.5x18 rear.¹	19" AMG triple 5-spoke, 8.5x19 front—9.5x19 rear.¹
Tires	255/40 R18 front—285/35 R18 rear, high-performance.¹	255/40 R18 front—285/35 R18 rear, high-performance.¹	255/35 ZR19 front—285/30 ZR19 rear, high-performance.¹
Spare tire	Collapsible compact limited-use tire on lightweight wheel with portable electric air compressor.		

BRAKES

Brake system	4-circuit electrohydraulic.	4-circuit electrohydraulic.	AMG-enhanced 4-circuit electrohydraulic.
Brake discs—calipers, front Brake discs—calipers, rear	13.0" perforated/internally ventilated—4-piston fixed. 11.8" solid—single-piston floating.	14.2" perforated/internally ventilated—6-piston fixed. 13.0" internally ventilated—4-piston fixed.	14.2" compound perforated/internally ventilated—AMG 6-piston fixed. 13.0" compound perforated/internally ventilated—AMG 4-piston fixed.
Electrohydraulic braking	Electrohydraulic braking system with automatic Brake Drying and Predictive Brake Priming.		
Antilock Braking System (ABS) and Brake Assist (BAS)	Standard.	Standard.	Standard.

SL 550

SL 600

SL 63 AMG

EXTERIOR DIMENSIONS

Wheelbase	100.8 in	100.8 in	100.8 in
Overall length	180.4 in	180.4 in	180.8 in
Overall height, top up	51.1 in	51.1 in	51.1 in
Overall width with mirrors	81.5 in	81.5 in	81.5 in
Curb weight	4,220 lbs	4,455 lbs	4,274 lbs

SL 550

SL 600

SL 63 AMG

INTERIOR DIMENSIONS

Headroom, top up	37.7 in	37.7 in	37.7 in
Legroom	42.9 in	42.9 in	42.9 in
Shoulder room	54.0 in	54.0 in	54.0 in
Cargo capacity, top up ¹⁴	10.2 cu ft	10.2 cu ft	10.2 cu ft
Cargo capacity, top down ¹⁴	7.2 cu ft	7.2 cu ft	7.2 cu ft

اراد خودرو فارما

تلفن: ۰۲۱ ۸۸۶۲۰۸۵

FarmaSOS.com

EXTERIOR

●	●	–	Dual chrome squared exhaust tips.
–	–	●	Dual twin polished chrome exhaust tips.
●	●	●	Electrohydraulic retractable aluminum hardtop, operated via console control or SmartKey remote. Rear window pivots 180° while top folds for more space-efficient stowage of folded top in trunk.
●	●	●	Easy-Pack System tilts up folded roof at the touch of a button for easier access to trunk.
●	●	●	Removable trunk separator for increased trunk space (over 0.74 cu ft). ¹⁵
●	●	●	Attachable fine-mesh wind deflector (fastens to roll bar).
●	●	●	Dual heated power mirrors linked to driver's seat memory.
●	●	●	Auto-dimming left-side mirror.
●	●	●	Electrically heated rear window with auto-shutoff based on time, driving speed and outside temperature.
●	●	●	Heated washer nozzles. Heated wiper parking position.
●	●	●	Rain-sensing variable intermittent wipers measure rainfall on windshield and adjust wiper speed and frequency accordingly.
●	●	●	Bi-Xenon High-Intensity Discharge (HID) low-/high-beam headlamps with Active Curve Illumination, automatic level control, clear high-impact polycarbonate lenses and heated headlamp washers.
●	●	●	Halogen front foglamps. Single red rear foglamp in left taillamp cluster.
●	●	●	Corner-illuminating front foglamps, activated via turn signal or steering wheel at speeds under 25 mph.
●	●	●	Driver-selectable light-sensing headlamps can be set via the Auto position of the headlamp switch to automatically illuminate in darkness.
●	●	●	Programmable daytime running lamps with auto-on override in darkness.
●	●	●	Dual-intensity LED brakelamps and taillamps.

INTERIOR

●	●	●	3-spoke multifunction sport steering wheel.
●	●	●	Power windows with one-touch express-up/down for front windows and one-touch express-down for rear windows, via front window controls.
●	●	●	Auto-dimming rearview mirror.
●	●	●	4-way (tilt/telescoping) power steering column linked to driver's seat memory.
●	●	●	Programmable EASY-EXIT feature raises steering column.
○ ¹⁶	●	○ ¹⁶	Electronic Trunk Closer allows driver to open and close the trunk via a switch on the driver-side door panel or under the trunk lid.
●	●	●	Electronic cruise control.
●	●	●	Shelf behind seats with retractable luggage straps. Dual enclosed storage compartments beneath luggage shelf. Locking the car from outside automatically locks all of these compartments for added convenience when parking with the top down.

CLIMATE CONTROL

●	●	●	Dual-zone climate control with individual driver and passenger controls for temperature and airflow direction, with dual automatic modes.
●	●	●	Climate control compensates for driving speed, window and hardtop positions, and ambient temperature.
●	●	●	REST mode can ventilate the cabin or help keep the cabin warmer using residual heat for up to 30 minutes after the car has been turned off.
●	●	●	Electrostatic dust and pollen filter. Integrated activated charcoal filter with smog-sensing automatic recirculation of filtered cabin air.
●	●	●	Sun sensor helps compensate for the effects of direct sunlight on the occupants.
●	●	●	Humidity/dewpoint sensor reduces window fogging during humid weather and helps prevent overdrying of cooled air.
●	●	●	Seat-belt usage sensors allow climate control system to focus first on occupied seats.

SEATING

●	●	●	12-way power front seats with pneumatically adjustable lumbar support and 3-position memory. Driver's seat memory includes steering column and outside mirror positions.
–	–	●	AMG sport seats.
●	●	●	Heated seats.
○ ¹⁶	●	○ ¹⁶	Active Ventilated Seats with eight internal fans plus heating feature.
○ ¹⁶	●	○ ¹⁶	AIRSCARF.
○ ¹⁶	●	●	Multicontour seatbacks with pneumatically adjustable side bolsters, shoulder supports and triple lumbar supports. Massage feature for central lumbar region.
●	●	●	Easy-access courtesy feature with obstruction sensor. A button tilts seat back, power-glides seat forward and restores seat position.
●	–	–	Hand-fitted leather upholstery on seats and head restraints.
○ ¹⁶	–	–	Hand-fitted Premium Leather upholstery on seats and head restraints.
–	●	–	Hand-fitted Exclusive Leather on seats, head restraints, dashboard, console, doors, armrests, roll bar and rear-cabin operating panels. Color-keyed topstitching on doors, dashboard and console. Alcantara-covered ceiling and sun visors.
●	–	–	Leather-trimmed steering wheel and shift knob.
○ ¹⁶	●	–	Wood/leather steering wheel and shift knob.
●	–	●	AMG leather-trimmed sport steering wheel with shift paddles.
●	●	○ ¹⁶	Hand-polished Burl Walnut or Black Ash wood trim on console and doors.
–	–	●	Carbon Fiber trim on console and doors.
●	●	●	Aluminum door sill trim (with AMG insignia on SL 63 AMG).

INSTRUMENTATION

●	●	●	Electronic analog speedometer, tachometer and gauges for fuel level and coolant temperature.
–	–	●	AMG instrument cluster with AMG RACETIMER ¹⁷ and gear position displays.
●	●	●	Automatic illumination of displays and controls based on ambient lighting.
●	●	●	Dual multifunction displays in speedometer and tachometer faces indicate Touch Shift gear selection and Shift mode, and can be scrolled via steering-wheel controls to operate and display various menus and vehicle features: <ul style="list-style-type: none"> • Odometer, trip meter and outside temperature indicator. • Digital speedometer, Maintenance System (see below) and oil-level check. • Radio station, 6-disc CD/DVD changer, iPod® playlist/track and SIRIUS Satellite Radio. • Hard-drive-based Navigation System route guidance. • Vehicle reminder and message indicator. • Driver-programmable settings for instrument cluster and lighting, vehicle and convenience features. • Trip computer (elapsed time, fuel consumption and distance to empty). • DISTRONIC Adaptive Cruise Control settings.¹⁸ • Mobile phone book.
●	●	●	Mercedes-Benz Maintenance System displays distance remaining to next basic maintenance service, indicates type of service due and provides automatic reminder when service interval draws near.
●	●	●	Tire Pressure Monitoring System alerts the driver to a loss of tire pressure via the multifunction display and can illuminate a warning icon.

RESTRAINT SYSTEMS

LOCKING/SECURITY

AUDIO/NAVIGATION/TELEMATICS

OPTION PACKAGES

●	●	●	Integrated Restraint System: • Driver and passenger are each provided with a dual-stage front air bag (adaptive for the passenger), a door-mounted side-impact head/thorax air bag and a 3-point seat belt with an Emergency Tensioning Device (ETD) and belt force limiter. Driver is also provided with a knee bag. ⁷
●	●	●	Dual-stage front air bags (adaptive for the passenger) are deployed in response to frontal impact severity exceeding a preset deployment threshold and the Occupant Classification System (for the passenger seat). ⁷
●	●	●	Occupant Classification System (OCS): • OCS automatically turns the passenger's front air bag on or off and adjusts the air bag inflation rate based on the weight category determined by weight sensor readings from the front passenger seat. ¹⁹
●	●	●	ETDs are deployed in a front or rear impact exceeding a preset threshold of severity, or certain rollovers. An ETD will not deploy if seat belt is unfastened.
●	●	●	Mercedes-Benz Tele Aid Automatic Collision Notification engages the SOS function if an air bag or ETD deploys. ²⁰
●	●	●	Selectable seat-belt retractor for passenger seat to help secure a child seat.
●	●	●	Seat belts are attached to seat frames at all three points. Shoulder belts height-adjust automatically.
●	●	●	Head restraints automatically height-adjust as the seats are moved fore-aft. Head restraints also power-adjust for height and manually adjust fore-aft.
●	●	●	Pop-up roll bar: If sensors detect an imminent rollover, a high-strength steel roll bar automatically deploys in 0.3 seconds. Driver can also raise and retract the roll bar electrically via a console control. ⁸

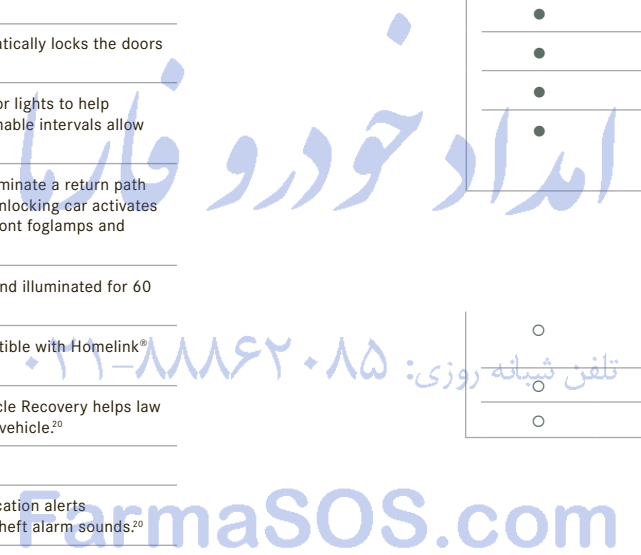
●	●	●	SmartKey uses an electronic code to unlock the gearshift and ignition. Removing SmartKey from ignition disables engine computer to help prevent unauthorized starting.
●	●	●	SmartKey remote control integrates: Remote Door Lock/Unlock buttons, trunk opener with valet lockout, removable valet key and panic alarm. Driver may selectively unlock only the driver's door and fuel filler or both doors plus the trunk and fuel filler.
●	●	●	SmartKey offers infrared-remote opening/closing of windows and remote raising/lowering of hardtop, and can turn on Active Ventilated Seats ¹⁷ from outside the car.
●	●	●	Driver-programmable drive-away locking automatically locks the doors when the car reaches 9 mph.
●	●	●	Night security illumination uses the car's exterior lights to help illuminate a path after parking. Driver-programmable intervals allow lights to stay on for 15 seconds or not at all.
●	●	●	Locator lighting uses the car's lights to help illuminate a return path when the car is remote-unlocked in darkness. Unlocking car activates parking lamps, taillamps, license plate lamps, front foglamps and side marker lamps.
●	●	●	Emergency trunk release, located inside trunk and illuminated for 60 minutes after trunk lid is closed.
●	●	●	Integrated 3-button garage door control, compatible with Homelink [®] components and some other systems.
●	●	●	Mercedes-Benz Tele Aid GPS-based Stolen Vehicle Recovery helps law enforcement agencies track and recover stolen vehicle. ²⁰
●	●	●	Mercedes-Benz Tele Aid Remote Door Unlock. ²⁰
●	●	●	Mercedes-Benz Tele Aid Automatic Alarm Notification alerts Mercedes-Benz to contact vehicle owner if antitheft alarm sounds. ²⁰

●	●	●	Cockpit Management and Data (COMAND) system.
●	●	●	Hard-drive-based Navigation System.
●	●	●	Bluetooth [®] interface for hands-free calling ⁹
●	●	●	Enhanced Voice Control.
●	●	●	harman/kardon LOGIC7 [®] surround-sound system with Dolby [®] Digital 5.1.
●	●	●	Integrated 6-disc CD/DVD changer.
●	●	●	SIRIUS Satellite Radio.
●	●	●	iPod [®] /MP3 Media Interface.
●	●	●	Mercedes-Benz Tele Aid System uses GPS satellites plus a cellular link to provide 24-hour live assistance for: emergency aid (SOS button), roadside assistance (Wrench button) or information services (<i>i</i> -button) ²⁰
INDIVIDUAL OPTIONS			
○	●	○	Panorama Sunroof includes a tinted-glass retractable hardtop with a manually retractable internal sunshade.
○	○	○	DISTRONIC Adaptive Cruise Control.
○	●	○	PARKTRONIC system.

○	●	○	Premium 1 Package: • Heated and Active Ventilated Seats. • AIRSCARF. • Multicontour seatbacks (standard SL 63 AMG). • KEYLESS-GO. • Electronic Trunk Closer.
○	-	-	Trim Package: • Wood/leather steering wheel and shift knob. • Hand-fitted Premium Leather upholstery on seats and head restraints.
○	○	-	SL Wheel Package: • 19" staggered-width AMG 5-spoke wheels with high-performance tires. ¹ • Sport steering wheel with shift paddles. • Smoke-color headlamps and taillamps. • Silver front brake calipers. • Perforated rear brake discs. • "M" Mode (SL 550 only).
-	-	○	AMG Performance Package: • 186-mph speed limiter. ²¹ • 19" AMG twin 5-spoke forged light-alloy wheels with high-performance tires. ¹ • AMG track-calibrated Active Body Control suspension. • AMG limited slip differential. • AMG sport steering wheel with aluminum shift paddles.

designo EDITIONS

○	○	○	Espresso Edition: • <i>designo</i> Mocha Black metallic paint. • Exclusive interior treatment with <i>designo</i> Sand Nappa leather and Natural Maple wood trim. • Wood/leather steering wheel and shift knob (SL 550 and SL 600 only). • Alcantara-covered ceiling and sun visors.
○	○	○	Graphite Edition: • <i>designo</i> Graphite metallic paint. • Exclusive interior treatment with <i>designo</i> Cortecchia Nappa leather and Natural Maple wood trim. • Wood/leather steering wheel and shift knob (SL 550 and SL 600 only). • Alcantara-covered ceiling and sun visors.
○	○	○	Porcelain White Edition (Interior Package): • Exclusive interior treatment with <i>designo</i> Porcelain Nappa leather and Black Piano Lacquer wood trim. • Wood/leather steering wheel and shift knob (SL 550 and SL 600 only). • Alcantara-covered ceiling and sun visors.



Mercedes-Benz Tele Aid²⁰

Three buttons put a multitude of services at system subscribers' fingertips: emergency response (SOS button), roadside assistance (Wrench button) and even information services (*i*-button).²² Enhance your sense of security with Remote Door Unlock and Stolen Vehicle Recovery. Enhance your control with features like real-time traffic updates. With an active Mercedes-Benz Tele Aid subscription, you may be eligible for a discount from your insurance provider.

Mercedes-Benz Search & Send

The Internet is a great tool for planning trips and vacations, and Search & Send makes it even more effective. Use Yahoo!® Local Maps and Google™ Maps to plan routes and attractions, then send that information directly to your vehicle's Navigation System. Information can also be sent to you while you're traveling, so friends can forward tips on great things to do and see, or the best way to go.

Mercedes-Benz Concierge

Expand your privileges with access to a Personal Concierge that fulfills your requests for nearly "anything, anytime, anywhere" and an Online Concierge for accessing your Personal Concierge via your computer or PDA wherever Internet access is available, as well as Traffic Information²³ and Route Assistance.²⁴

24-hour Roadside Assistance

The first of its kind and still the only one that remains in effect for the life of the vehicle. Our Roadside Assistance technicians draw on years of experience and training to get you back on the road as quickly as possible.²⁵

Mercedes-Benz Limited Warranties

Our New Vehicle Limited Warranty runs for 48 months or 50,000 miles, whichever comes first. And anytime during the new vehicle warranty coverage, you can purchase a Mercedes-Benz Extended Limited Warranty that will extend protection after the New Vehicle Limited Warranty expires.²⁶

Mercedes-Benz Maintenance System

Routine service intervals are fixed and predictable at every 10,000 miles or one year, whichever occurs first.²⁷ About one month before service is due, your vehicle will remind you via a dashboard display that your next service is approaching. You may also pay for required maintenance in advance with Prepaid Maintenance and enjoy the convenience of having the cost included in your monthly lease or finance payment.²⁸

24-hour Customer Service

Our Customer Assistance Center is your one-stop source for answers. Whether you need to know how to use your audio system, find the nearest Mercedes-Benz dealer, get pricing or learn about personal and automotive accessories, just call 1-800-FOR-MERCEDES or press the Mercedes-Benz Tele Aid *i*-button in your vehicle.

Sign and Drive service

Our legendary Roadside Assistance service includes bringing you some fuel if you've run out, replacing a flat tire with your spare or jump-starting your car if the battery dies. All at no charge, and all for as long as you're driving a Mercedes-Benz — even somebody else's.²⁹ Help is as close as your vehicle's Wrench button (for Mercedes-Benz Tele Aid subscribers) or just a phone call away at 1-800-FOR-MERCEDES.

Trip Interruption benefits

In the unlikely event that a breakdown covered by your MBUSA New Vehicle Limited Warranty occurs more than 100 miles from your home, leaves your Mercedes-Benz inoperable or unsafe to drive and requires overnight repairs at a Mercedes-Benz Center, you'll be reimbursed up to \$300 per day for any documented expenses—for up to three days—including meals, lodging and substitute transportation.

Dealer Alternate Transportation Program

Whenever you bring your vehicle into an official Mercedes-Benz Center for servicing during the warranty period, ask about your dealer's Alternate Transportation Program—so you can maintain your busy schedule while your dealer maintains your vehicle.³⁰

Mercedes-Benz Financial

Mercedes-Benz Financial offers a wide and impressive array of flexible and convenient financing options. To determine whether purchasing or leasing is right for you and to estimate the monthly payment of your next Mercedes-Benz, visit MercedesBenzFinancial.com.

European Delivery Program

With our factory delivery program, enjoy a honeymoon with your new Mercedes-Benz as you savor the delight of driving it in the land where it was built—while you enjoy a 7% savings on many models.³¹ Also take advantage of the optional Rally Package, which takes you through the Black Forest and the Alps, then on to Munich, staying at luxurious, historic hotels all along the way.

To learn more about these and many other services—including dealer locations and financing options—visit us at MBUSA.com today.

ENDNOTES

1 Lower aspect ratio tires and accompanying wheels provide substantially increased treadwear, increased tire noise and reduced ride comfort. Serious wheel and tire damage may occur if the vehicle is operated on rough or damaged road surfaces or upon encountering road debris or obstacles. These tires are not designed for use on snow and ice. Winter tires mounted on appropriately sized and approved wheels are recommended for driving in those conditions.

2 Braking effectiveness also depends on proper brake system maintenance, and tire and road conditions.

3 Stated rates of acceleration are based upon manufacturer's track results and may vary depending on model, environmental and road surface conditions, driving style, elevation and vehicle load.

4 iPod is a registered trademark of Apple Computer, Inc. All iPod devices are sold separately. Feature not compatible with iPod Shuffle. See dealer for details.

5 DISTRONIC Adaptive Cruise Control is no substitute for active driving involvement. It does not react to stationary objects, nor recognize or predict the curvature and lane layout of the road or the movement of vehicles ahead, and can only apply a maximum of 20% of vehicle braking power. It is the driver's responsibility at all times to be attentive to traffic and road conditions, and to provide the steering, braking and other driving inputs necessary to retain control of the vehicle.

6 While the Navigation System provides directional assistance, the driver must remain focused on safe driving behavior, including paying attention to traffic and street signs. The driver should utilize the system's audio cues while driving and should only consult the map or visual displays once the vehicle has been stopped in a safe place. Maps do not cover all areas or all routes within an area.

7 WARNING: THE FORCES OF A DEPLOYING AIR BAG CAN CAUSE SERIOUS OR FATAL INJURIES TO A CHILD UNDER AGE 13. See Operator's Manual for warnings and information on air bags, seat belts, seating of children in the vehicle and the use of child restraints.

8 The roll bar system is designed to enhance the level of rollover protection compared to a vehicle without one. No system, regardless of how advanced, can eliminate the chance of injury in an accident. Please always wear your seat belt.

9 BLUETOOTH® INTERFACE DOES NOT PROVIDE PHONE CHARGING OR EXTERNAL ANTENNA. PHONE BOOK DOWNLOAD AND VOICE INTERACTIVITY FEATURES ARE DEPENDENT ON SELECTED HANDSET. VISIT MBUSA-MOBILE.COM FOR DETAILS.

10 Requires subscription. Service subscription for the first six months included with purchase.

© 2008 Dolby Laboratories, Inc. All rights reserved. Dolby and the double-D symbol are registered trademarks of Dolby Laboratories. All other trademarks remain the property of their respective owners. DTS is a registered trademark of DTS, Inc. Copyright © 2007 DTS, Inc. All rights reserved.

SIRIUS and the SIRIUS dog logo are registered trademarks of SIRIUS Satellite Radio Inc. NFL is a registered trademark of the National Football League. NASCAR® is a registered trademark of the National Association for Stock Car Auto Racing, Inc. NBA is a registered trademark of NBA Properties, Inc. All rights reserved. For full Terms & Conditions, visit sirius.com. Pricing and programming are subject to change. Not available in Alaska, Hawaii or Puerto Rico. Six-month service subscription included with purchase.

13 Drivers are cautioned not to wait for the DISTRONIC Proximity Warning System before braking, as that may not afford sufficient time and distance to brake safely.

14 Unsecured cargo can become hazardous in a collision. Always secure cargo using floor-mounted tie-downs.

15 Hardtop will not retract without trunk separator. Trunk space is increased to 0.74 cu ft when trunk separator is removed and there is no spare tire.

16 Optional or part of an Option Package. See optional equipment listing on page 47.

17 Only for timing use on roads and in conditions where high-speed driving is permitted. Racing on public roads is prohibited under all circumstances and posted speed limits should always be obeyed.

18 When equipped with this feature.

OCCUPANT CLASSIFICATION SYSTEM (OCS) IS DESIGNED TO TURN THE FRONT PASSENGER'S FRONT AIR BAG OFF WHEN THE SYSTEM SENSES THE WEIGHT OF A TYPICAL CHILD 12 MONTHS OLD OR LESS PLUS THE WEIGHT OF A STANDARD APPROPRIATE CHILD RESTRAINT. SEE OPERATOR'S MANUAL FOR IMPORTANT ADDITIONAL INFORMATION ON THIS SYSTEM AND FOR FURTHER INFORMATION REGARDING THE TRANSPORTATION OF CHILDREN HEAVIER THAN A TYPICAL 12-MONTH-OLD.

Mercedes-Benz Tele Aid equipment is standard on all SL-Class models. First year's Mercedes-Benz Tele Aid service provided at no additional cost with subscription. Subscription and acquaintance call required for service to be active. Service operates only where cellular and GPS coverage are available and requires adequate power supply. Owner must authorize vehicle tracking by providing passcode and a valid stolen vehicle police report number. Passcode required to activate Remote Door Unlock. See dealer for details of telematics services.

21 Please obey all speed laws.

Concierge service available only with Mercedes-Benz Concierge. Traffic Information and Route Assistance use is included as part of Mercedes-Benz Concierge and is available at an additional per-use charge when used with the Mercedes-Benz Tele Aid service. See dealer for details.

Performance of the automated voice system varies depending on the noise level in and around the vehicle. Traffic Information is based on available broadcast data, not available in all areas and only provided for routes that have been personalized on the Mercedes-Benz Tele Aid website (up to five routes) or are within a specified radius of your vehicle's present location. See Mercedes-Benz Tele Aid section of MBUSA.com for available cities.

24 Route Assistance is available for an additional charge with the Mercedes-Benz Tele Aid service and included as part of Mercedes-Benz Concierge.

Vehicle must be accessible from main roads. Roadside Assistance repairs may involve charges for parts, service and towing. Depending on the circumstances, these services may be provided by an outside service, courtesy of Mercedes-Benz Roadside Assistance. For full details of the Roadside Assistance Program, please see your dealer.

26 Please see your dealer for warranty details as well as for terms, conditions and pricing for extended warranty options. A surcharge for extended warranties may apply if purchased more than 30 days after the vehicle is purchased.

27 Requires use of 229.5-spec oil and high-performance fleece oil filter for gasoline engines and 229.51-spec oil for diesel engines. Driver is responsible for monitoring fluid levels and tire pressure between service visits. See Maintenance Booklet for details.

28 Prepaid Maintenance only covers items that are critical to ensuring the long-term performance of your vehicle. Ask your dealer for a brochure containing details regarding coverage and terms.

29 For full details of Sign and Drive service, as well as the Roadside Assistance Program, please see your dealer.

30 Certain restrictions may apply. Terms, conditions and dealer participation may vary.

31 European Delivery discount available on select models. Please see your dealer for details.

